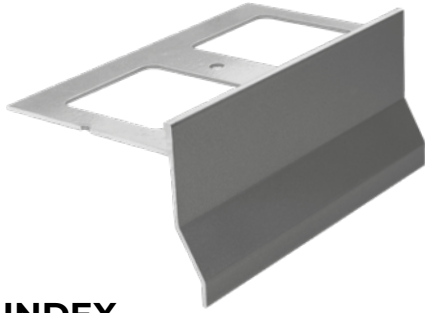


# PROFILE FOR BALCONIES WITH DRIP



## INDEX

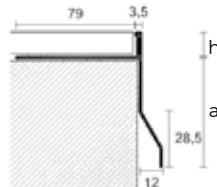
1. Code Registry
2. Use
3. Fixing & Maintenance
4. Technical Specification

## 1. CODE REGISTRY

Code	Description	Colour	(mm)	Weight	Pkg. / Pallet
PRO21-2072	Profile for Balconies with Drip	Grey ash	h 10 x a 55 x 2.700	0,508 kg/m	27 m / - m
PRO21-2073	Profile for Balconies with Drip	Antique Grey	h 10 x a 55 x 2.700	0,508 kg/m	27 m / - m
PRO21-2074/10	Profile for Balconies with Drip	Grey ash	h 10 x a 75 x 2.700	0,608 kg/m	27 m / - m
PRO21-2075/10	Profile for Balconies with Drip	Antique Grey	h 10 x a 75 x 2.700	0,608 kg/m	27 m / - m
PRO21-2074	Profile for Balconies with Drip	Grey ash	h 12,5 x a 75 x 2.700	0,608 kg/m	27 m / - m
PRO21-2075	Profile for Balconies with Drip	Antique Grey	h 12,5 x a 75 x 2.700	0,608 kg/m	27 m / - m

## MATERIAL

Made of painted grey (RAL 7038) Aluminum-Magnesium-Silicon (6060 T6) alloy and antique grey.



## 2. USE

Used as protection and finishing of the external edges of terraces and balconies, thus protecting the edges of the flooring tiles.

## 3. FIXING

Remove the profile from the packaging.  
Check that the thickness of the covering/flooring to be laid is not greater than the dimension of the profile (see label).  
Where present, also remove any protection (protective and/or shrink-wrapped film) added to protect the finish.  
Measure the length required and cut the profile to this length using an appropriate tool.  
Level the adhesive on the laying surface using a toothed spreader.  
Lay the covering delicately, making sure it is flush with the profile and leaving the right space for a grout line (usually 2-5mm) to be filled with a suitable elastic sealant.  
Remove any excess grout, adhesive, solvents etc. with a soft sponge and water within ten minutes of application.

## MAINTENANCE

Care and maintenance procedures for the materials used to make these profiles depends largely on the type of alloy and/or finish used.  
The instructions provided below describe the operations to be performed on the profile to restore it as much as possible to its original condition.  
The purpose of this document is to provide as many general indications as possible to guide you on when and how to clean the product, but they should also be verified on a case-by-case basis.  
It should be pointed out that there are specific responsibilities in each part of the product's life cycle, starting from when it is installed the first time.

### Aluminium

No special maintenance is required and aluminium products can be easily treated with colourless alcohol in a water solution or using ordinary detergents, provided they do not contain acid (hydrochloric or hydrofluoric).

Detergent products made by multiple manufacturers and sold under a variety of commercial brands can generally be used for cleaning.

Generally speaking, there are three types of products:

- Alkaline
- Neutral
- Acid

For cleaning purposes, we recommend using a neutral detergent diluted in water then rinsing with water only, using a non-abrasive sponge and/or cloth to avoid scratching and/or damaging the anodized surface.

# PROFILE FOR BALCONIES WITH DRIP

## MAINTENANCE

During cleaning, the following aspects must be kept in mind at all times:

- Do not use acid or alkaline detergents because they could damage the aluminium;
- Do not use products and/or abrasive materials;
- Do not use organic solvents on paint-coated surfaces;
- Do not use detergents without first checking their chemical composition;
- Do not apply detergents straight onto the surface to be cleaned;
- Surfaces must be "cold" (max T°= 30°C) during cleaning and not exposed to direct sunlight;
- Detergents used in cleaning must also be "cold" (max T° = 30°C) and steam sprays should not be used. In any case, the final stage in the cleaning process is always sufficient rinsing of the parts treated with water.

They must then be immediately dried using soft fabric or leather cloths.

Polishes or similar products are not required.

Clean profiles carefully as soon as required, following the instructions on the product package, to prevent any residues of concrete, grout or similar substances from attacking the surface.

## 4. TECHNICAL SPECIFICATION

Specification	Description	Unity	Price
<b>Dak.D.PRO21.207x</b>	Supply and installation of Horizontal profile for the protection and finishing of the external edges of terraces and balconies. Recommended for tiles with a thickness up to 12 mm. Made of painted grey (RAL 7038) Aluminum-Magnesium-Silicon (6060 T6) alloy and antique grey. Used as protection and finishing of the external edges of terraces and balconies, thus protecting the edges of the flooring tiles.		
<b>Dak.D.PRO21.2072</b>	10 x 55 - Grey ash.....	m	-
<b>Dak.D.PRO21.2073</b>	10 x 55 - Antique Grey.....	m	-
<b>Dak.D.PRO21.2074/10</b>	10 x 75 - Grey ash.....	m	-
<b>Dak.D.PRO21.2075/10</b>	10 x 75 - Antique Grey.....	m	-
<b>Dak.D.PRO21.2074</b>	12,5 x 75 - Grey ash.....	m	-
<b>Dak.D.PRO21.2075</b>	12,5 x 75 - Antique Grey.....	m	-