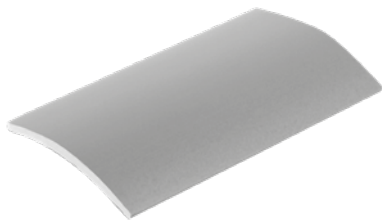


ALUMINUM OR BRASS JUNCTION



INDEX

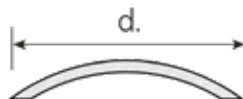
1. Code Registry
2. Use
3. Technical Specification

1. CODE REGISTRY

Code	Description	(mm)	Weight	Colour	Pkg. / Pallet
PRO10-1990	Aluminum joint cover Silver	d 30,0 x 900	0,197 kg/m	Aluminum	45 m / - box
PRO10-1991	Aluminum joint cover Silver	d 30,0 x 2.700	0,197 kg/m	Aluminum	54 m / - box
PRO10-1992	Polished brass joint cover	d 30,0 x 900	0,165 kg/m	Brass	45 m / - box
PRO10-1993	Polished brass joint cover	d 30,0 x 2.700	0,165 kg/m	Brass	54 m / - box

MATERIAL

Made of silver aluminum or polished brass effect.



2. USE

Used to create an overlapping next the thresholds in order to highlight the transition between different colours of tiles and/or materials (eg. ceramic and parquet).

3. TECHNICAL SPECIFICATION

Specification	Description	Unity	Price
Dak.I.PRO10.199x	Supply and installation of connecting element with overlap for the thresholds in the transition between different materials. Available in sizes 30 x 900 or 30 x 2.700 mm. Single shrink packed inside a PVC tube. The barcode is shown both on the profile and on the tube (on the profile and on the cap). Made of silver aluminum or polished brass effect. Used to create an overlapping next the thresholds in order to highlight the transition between different colours of tiles and/or materials (eg. ceramic and parquet).		
Dak.I.PRO10.1990	Aluminum - d 30,0 x 900 mm.....	m	-
Dak.I.PRO10.1991	Aluminum - d 30,0 x 2.700 mm.....	m	-
Dak.I.PRO10.1992	Brass - d 30,0 x 900 mm.....	m	-
Dak.I.PRO10.1993	Brass - d 30,0 x 2.700 mm.....	m	-