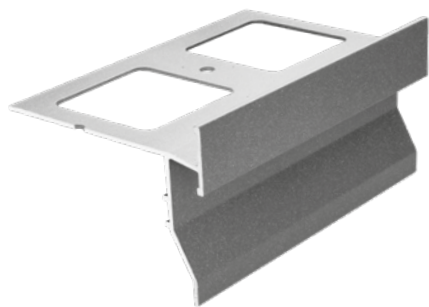


PROFILE FOR BALCONIES WITH WATER DRAIN



INDEX

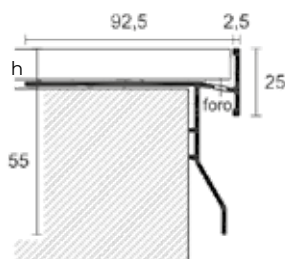
1. Code Registry
2. Use
3. Fixing & Maintenance
4. Technical Specification

1. CODE REGISTRY

Code	Description	Colour	(mm)	Weight	Pkg. / Pallet
PRO21-2076	Profile for Balconies with Water Drain	Grey ash	h 10 x a 55 x 2.700	0,601 kg/m	27 m / 1.080 m
PRO21-2077	Profile for Balconies with Water Drain	Antique Grey	h 10 x a 55 x 2.700	0,601 kg/m	27 m / 1.080 m
PRO21-2078	Profile for Balconies with Water Drain	Grey ash	h 12,5 x a 55 x 2.700	0,601 kg/m	27 m / 1.080 m
PRO21-2079	Profile for Balconies with Water Drain	Antique Grey	h 12,5 x a 55 x 2.700	0,601 kg/m	27 m / 1.080 m

MATERIAL

Made of painted grey (RAL 7038) Aluminum-Magnesium-Silicon (6060 T6) alloy and antique grey.



2. USE

Used as protection and finishing of the external edges of terraces and balconies, thus protecting the edges of the flooring tiles.

3. FIXING

Clean and prepare the laying surface, removing any dust or loose parts.

Remove the profile from the package and check that the thickness of the flooring to be laid is the same as the dimension of the profile selected (see label).

Measure the length of the perimeter to be protected and pre-cut the profiles, allowing 5 mm space between each element.

Stick tape on the inner surface of the profile, covering the draining holes to stop them from being blocked when the concrete layer is laid.

Lay the profile along the edge of the concrete screed and the corners on the fresh waterproofing mortar or adhesive, then fix in place with steel nails through the holes in the perforated flanges.

Cover all the gaps between elements using the relevant joints.

When the first layer of waterproofing mortar or adhesive used to secure the profile has matured, create the waterproofing layer with waterproofing cement layers (following the manufacturer's instructions).

When this has also matured, remove the tape protecting the drainage holes and lay the flooring over the top, making sure no adhesive gets into the holes and leaving a space of around 5 mm between the tile and the edge of the profile.

This gap should be filled with elastic sealant on top of a line of polyethylene foam.

We recommend using for pavements and structures receiving foot traffic.

PROFILE FOR BALCONIES WITH WATER DRAIN

MAINTENANCE

Care and maintenance procedures for the materials used to make these profiles depends largely on the type of alloy and/or finish used. The instructions provided below describe the operations to be performed on the profile to restore it as much as possible to its original condition. The purpose of this document is to provide as many general indications as possible to guide you on when and how to clean the product, but they should also be verified on a case-by-case basis. It should be pointed out there are specific responsibilities in each part of the product's life cycle, starting from when it is installed the first time.

Aluminium

No special maintenance is required and aluminium products can be easily treated with colourless alcohol in a water solution or using ordinary detergents, provided they do not contain acid (hydrochloric or hydrofluoric). Detergent products made by multiple manufacturers and sold under a variety of commercial brands can generally be used for cleaning.

Generally speaking, there are three types of products:

- Alkaline
- Neutral
- Acid

For cleaning purposes, we recommend using a neutral detergent diluted in water then rinsing with water only, using a non-abrasive sponge and/or cloth to avoid scratching and/or damaging the anodized surface.

During cleaning, the following aspects must be kept in mind at all times:

- Do not use acid or alkaline detergents because they could damage the aluminium;
- Do not use products and/or abrasive materials;
- Do not use organic solvents on painted surfaces;
- Do not use detergents without first checking their chemical composition;
- Do not apply detergents straight onto the surface to be cleaned;
- Surfaces must be "cold" (max T°= 30°C) during cleaning and not exposed to direct sunlight;
- Detergents used in cleaning must also be "cold" (max T° = 30°C) and steam sprays should not be used. In any case, the final stage in the cleaning process is always sufficient rinsing of the parts treated with water.

They must then be immediately dried using soft fabric or leather cloths.

Polishes or similar products are not required.

Clean profiles carefully as soon as required, following the instructions on the product package, to prevent any residues of concrete, grout or similar substances from attacking the surface.

4. TECHNICAL SPECIFICATION

Specification	Description	Unity	Price
Dak.D.PRO21.207x	Supply and installation of Horizontal profile for the protection and finishing of the external edges of terraces and balconies. Recommended for tiles with a thickness up to 12,5 mm. This version allows the water discharge thanks to the holes on the profile. Made of painted grey (RAL 7038) Aluminum-Magnesium-Silicon (6060 T6) alloy and antique grey. Used as protection and finishing of the external edges of terraces and balconies, thus protecting the edges of the flooring tiles.		
Dak.D.PRO21.2076	10 x 55 - Grey ash.....	m	-
Dak.D.PRO21.2077	10 x 55 - Antique Grey.....	m	-
Dak.D.PRO21.2078	12,5 x 55 - Grey ash.....	m	-
Dak.D.PRO21.2079	12,5 x 55 - Antique Grey.....	m	-