

SECUROCK CONSTRUCTION SLAB BY USG



INDEX

1. Code Registry
2. Use
3. Fire resistance tests
4. Technical specification

1. CODE REGISTRY

Code	Description	Dimensions (mm)	Colour	Weight	Pkg. / Pallet
INS04-40011	Construction slab for external application	2.200 x 1.200 x 12,7	Green	9,76 kg/m ²	132 m ²

MATERIAL Made of gypsum with fiber glass coating.

Weight	9,76 Kg/m ²
Edges	BD square
Thermal conductivity (at 10°C)	$\lambda_d = 0,25$ W/m K theoretical value as per EN 12524
Combustibility	A1 class as per EN 13501-1
Specific heat	$c_p = 1,0$ kJ/ kg theoretical value as per EN 12524
Steam permeability	33,7 g/m ² /24h as per ASTM E 96
Water adsorption	< 3% in weight
Coefficient of thermal expansion	$15,3 \times 10^{-6}$ m/m/°C
Flexural strength, parallel	> 214 N
Flexural strength, perpendicular	> 547 N
Mold resistance	10/10 as per ASTM D 3273

SECUROCK CONSTRUCTION SLAB BY USG

2. USE

Securock has an high resistance to fire, moisture and water. It is made of a gypsum core and an external fiberglass coating. High dimensional stability even in the presence of strong thermal hikes, flexible, easy to handle, workability and quick assembly.

APPEARANCE

Each slab has a green colour on both sides, with the indication of the side to be laid out (indicated by the presence of the Securock USG logos) and has straight longitudinal edges.

TECHNICAL FEATURES

Each slab is CE marked according to EN 15283-1

- GM H1 type (very low water absorption);
- Securock has an high fire resistance. (European Classification A1).
- mold resistant.

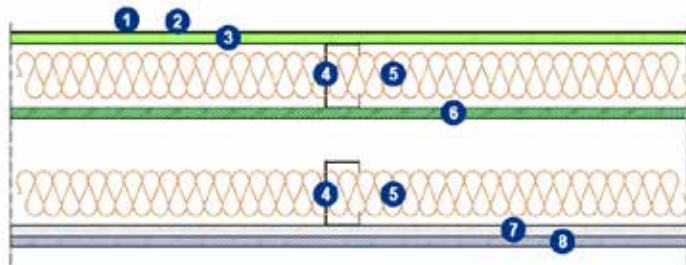
BENEFITS OF SECUROCK SLABS:

- **Humidity**
Securock has a high moisture resistance.
- **Antisism**
Securock is the best constructive solution in seismic areas.
- **Acoustics**
Securock can be modulated to achieve acoustic project performance.
- **Workability**
Securock is the very easy to handle and it is adapt to new and renovation construction
- **Sustainability**
Securock is a 100% recyclable product.

FURTHER BENEFITS:

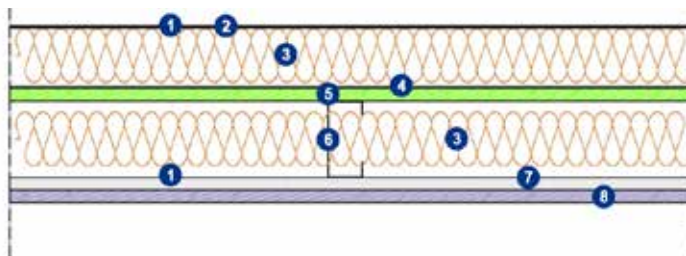
- Economics.
- Up to 60% savings on installation time.
- The excellent workability and versatility make it possible to achieve the most complex solutions of contemporary architecture in a quick and easy way.
- Easy handling: Securock is up to 50% lighter than concrete slabs.
- Easy to cut: Like all the others coated gypsum slabs, you just need a simple cutter, without the need for automatic equipment.
- Cleaning: The handling and cut of the Securock slabs does not generate dust or residues.

1. DRYWALL



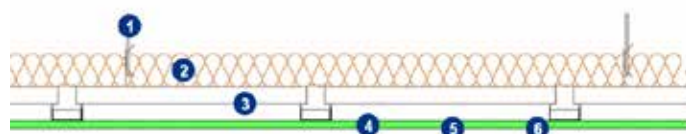
1. **RASODAK ECO 1000**
2. **PREMIUM NET** glass fiber mesh
3. **Securock® by USG**
4. Aluminum-Zinc metal
5. **ARTILEA Wall System 035** - Stone wool panel
6. Plasterboard slab H1
7. High impact resistant plasterboard slab D
8. Plasterboard with vapour barrier

2. ETICS SYSTEM



1. **RASODAK ECO 1000**
2. **PREMIUM NET** glass fiber mesh
3. **ARTILEA Wall System 035** - Stone wool panel
4. Fixing glue and mechanical fixing by **SGR anchors**
5. **Securock® by USG**
6. Aluminum-Zinc metal
7. High impact resistant plasterboard slab D
8. Plasterboard with vapour barrier

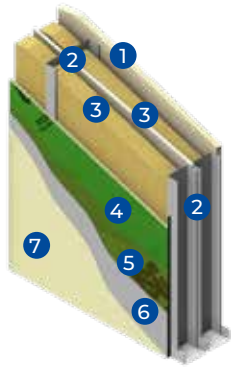
3. ORIZONTAL COVERING



1. Fixing elements
2. **ARTILEA Wall System 035** - Stone wool panel
3. Aluminum-Zinc metal
4. **Securock® by USG**
5. **RASODAK ECO 1000**
6. Finishing coating

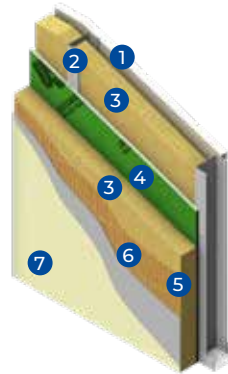
SECUROCK CONSTRUCTION SLAB BY USG

2. USE



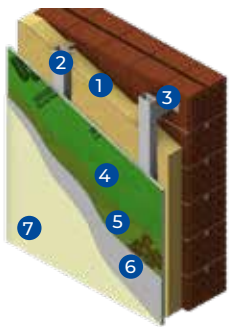
EXTERNAL DRYWALL

1. Slab
2. Aluminum-Zinc metal
3. **ARTILEA Wall System 035** - Stone wool panel
4. **Securock® by USG**
5. **PREMIUM NET** glass fiber mesh
6. **RASODAK ECO 1000**
7. Finishing coating



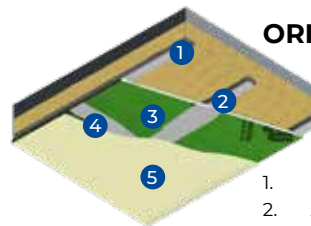
EXTERNAL ETICS SYSTEM

1. Slab
2. Aluminum-Zinc metal
3. **ARTILEA Wall System 035** - Stone wool panel
4. **Securock® by USG**
5. Mechanical fixing by **Tasselli SGR**
6. **PREMIUM NET** glass fiber mesh
7. Finishing coating



VENTILATED FACADE

1. **ARTILEA Wall System 035** - Stone wool panel
2. Aluminum-Zinc metal
3. Mechanical fixing
4. **Securock® by USG**
5. **PREMIUM NET** glass fiber mesh
6. **RASODAK ECO 1000**
7. Finishing coating

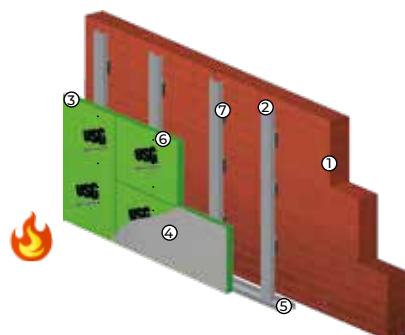


ORIZONTAL COVERING

1. Ceiling anchors
2. Aluminum-Zinc metal
3. **Securock® by USG**
4. **RASODAK ECO 1000**
5. Finishing coating

SECUROCK CONSTRUCTION SLAB BY USG

REDEVELOPMENT OF VERTICAL BRICK WALL



CERTIFIED FIRE RESISTANCE CLASS:

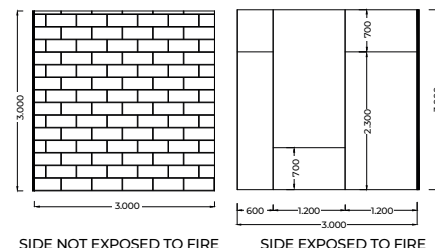
- Classification report: 17/14849-2022 Part 2
- Applus Laboratory
- Issue Date: 14 December 2017
- Test standard: EN 1364-1: 2015

SUPPORT:

Not-plastered brick wall, 80 mm thick,
NOT EXPOSED TO FIRE

NON-LOADBEARING WALL:

with metal frame with wall connection, 1
SECUROCK sheet 12.7 mm



FIRE RESISTANCE: EI 90 and EI20

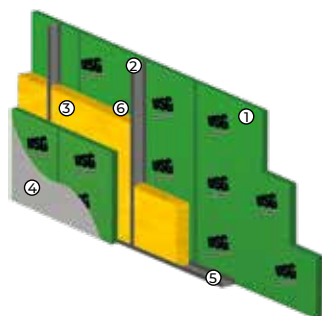
- **Fire resistance:** A1
- **Vertical Wall Type:** 8 cm thick brick
- **Protective coating:**
 - TYPE: Securock sheet 12.7 mm thick
 - Quantity: 1 sheet
- **System elements:**
 1. HOLLOW BRICK 8 cm
 2. STUD 50 x 27 mm
 3. SECUROCK® thickness 12,7 mm
 4. RASODAK ECO 1000
 5. "U" GUIDE 30 x 30 x 30 mm
 6. FIXALA \varnothing 3,5 x 35 mm
 7. HOLD DOWN CLIP 50 x 27 mm

*Direct application field:

height up to 4 meters. It is allowed:

- Wall height reduction and thickness wall increase
- Increase in the thickness of the component materials
- Reduction in width and length of the slabs
- Screw distance reduction and wall width increase

SYMMETRICAL NON-BEARING VERTICAL WALL



CERTIFIED FIRE RESISTANCE CLASS:

- Classification report: 17/14849-2017 Part 1
- Applus Laboratory
- Issue Date: 14 November 2017
- Test standard: EN 1364-1: 2015



FIRE RESISTANCE: EI 60

- **Fire resistance:** A1
- **Vertical Wall Type:** symmetrical non-bearing wall
- **Protective coating:**
 - TYPE: Securock sheet 12.7 mm thick
 - Quantity: 1 sheet
- **System elements:**
 1. SECUROCK® thickness 12,7 mm
 2. STUD 50 x 27 mm
 3. STONE WOOL 40 kg/m³, thickness 60 mm
 4. RASODAK ECO 1000
 5. "U" GUIDE 30 x 30 x 30 mm
 6. FIXALA \varnothing 3,5 x 35 mm

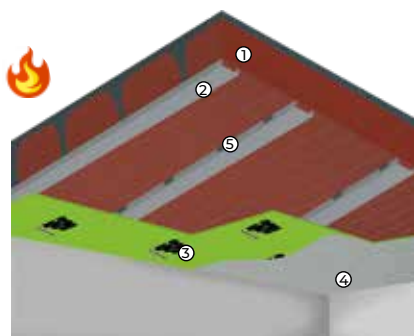
*Direct application field:

height up to 4 meters. It is allowed:

- Reduction in wall height
- Increased total wall thickness
- Increase in the thickness of the component materials
- Reduction in width and length of the slabs (not of the thickness)
- Struts distance reduction
- Screw distance reduction
- Wall width increase

SECUROCK CONSTRUCTION SLAB BY USG

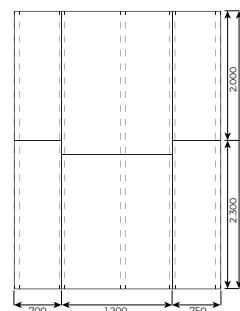
BRICK - CONCRETE SUSPENDED CEILING



CERTIFIED FIRE RESISTANCE CLASS:

- Classification report: 18/14849-12-1
- Applus Laboratory
- Issue Date: 16 January 2019
- Test standard: EN 1364-1: 2015

EI60



FIRE RESISTANCE: EI 60

- **Fire resistance:** A1
- **Vertical Wall Type:** ceiling
- **Protective coating:**
 - TYPE: Securock sheet 12.7 mm thick
 - Quantity: 1 sheet
- **System elements:**
 1. 16 cm BRICK-CONCRETE SUSPENDED CEILING
 2. PROFILE 50 x 27 mm
 3. SECUROCK® thickness 12,7 mm
 4. DK-BOND PLASTER
 5. HOLD DOWN CLIP 50 x 27 mm

4. TECHNICAL SPECIFICATION

Specification	Description	Unity	Price
Dak.B.INS04.40011	Supply and installation of noncombustible, moisture and mold-resistant panel that offers an improved coated fiberglass facer mat to maximize coverage of air/water barrier systems. Made of gypsum with fiber glass coating. Used for: <ul style="list-style-type: none"> • external walls, counterwalls and dropped ceiling; • high humidity environments; • supports for building coat insulation; • pillars and architectural elements exposed to atmospheric agents. · fire protection coverings. 	m ²	-