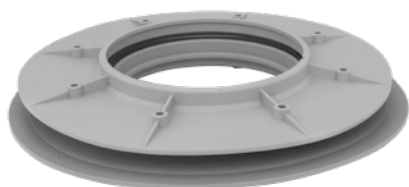


# FLANGE FOR SIPHONED GULLY



## INDEX

1. Code Registry
2. Use
3. Technical Specification

## 1. CODE REGISTRY

| Code        | Description   | Dimensions (mm) | Weight       | Pkg. / Pallet    |
|-------------|---------------|-----------------|--------------|------------------|
| TER07-1344F | Flange (pair) | 150 x 150       | 0,100 kg/pc. | 24 pcs / 600 pcs |

**MATERIAL**                      Made of PP (polypropylene).

## 2. USE

Used to connect the adjustable telescopic gully to the bituminous membrane on terraces or flat roofs.

## 3. TECHNICAL SPECIFICATION

| Specification            | Description   | Unity | Price |
|--------------------------|---|-------|-------|
| <b>Dak.D.TER07.1344F</b> | Supply and installation of pair of discs for connection to the bituminous membranes of the articles TER07-1343 and TER07-1342.<br>It is a product patented by Dakota.<br>Made of PP (polypropylene).<br>Used to connect the adjustable telescopic gully to the bituminous membrane on terraces or flat roofs. | pc.   | -     |