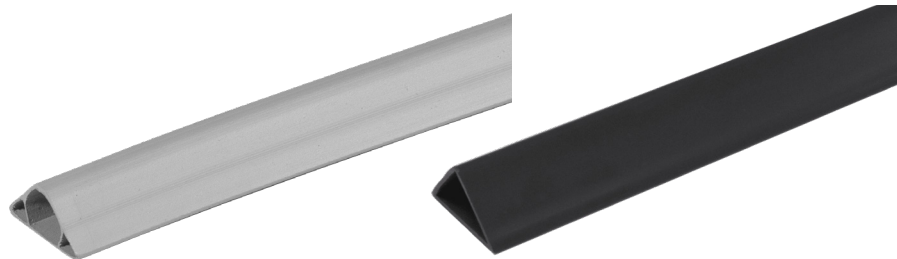


# CHAMFERS FOR PILLAR



PRO02-1600  
PRO02-1601  
PRO02-1602

PRO02-1600P  
PRO02-1601P

## INDEX

1. Code Registry
2. Description
3. Use
4. Technical Specification

## 1. CODE REGISTRY

| Code        | Description               | Measure (mm)    | Weight (kg/cf.) | Pkg. / Pallet      |
|-------------|---------------------------|-----------------|-----------------|--------------------|
| PRO02-1600  | Chamfers for Pillars      | 22 x 10 x 2.000 | 5,5             | 100 m / 150 boxes  |
| PRO02-1601  | Chamfers for Pillars      | 32 x 15 x 2.000 | 8,3             | 100 m / 100 boxes  |
| PRO02-1602  | Chamfers for Pillars      | 27 x 14 x 2.000 | 5,0             | 100 m / 100 boxes  |
| PRO02-1600P | Chamfers for Pillars Plus | 22 x 10 x 2.000 | 6,63            | 100 m. / 100 boxes |
| PRO02-1601P | Chamfers for Pillars Plus | 32 x 15 x 2.000 | 11,42           | 100 m. / 100 boxes |

## MATERIAL

Made of thermoset plastic

| Chamfer for Pillar - section | Code        | l x h   |
|------------------------------|-------------|---------|
|                              | PRO02-1600  | 22 x 10 |
|                              | PRO02-1601  | 32 x 15 |
|                              | PRO02-1602  | 27 x 14 |
|                              | PRO02-1600P | 22 x 10 |
|                              | PRO02-1601P | 32 x 15 |

# CHAMFERS FOR PILLAR

## 2. DESCRIPTION

The chamfer is manufactured in 2-meter bars from thermosetting plastic. Used in carpentry to prevent concrete from detaching from the corner edges of concrete pillars.

## 3. USE

Employee to consolidate and round off the edges of the pillars

## 4. TECHNICAL SPECIFICATION

| Item                     | Description  | Unit | Price |
|--------------------------|--|------|-------|
| <b>Dak.O.PRO02.160x</b>  | Supply and installation of chamfer for pillars realized in 2-meters bars in thermosetting plastic.<br>Specific use in building industry. |      |       |
| <b>Dak.O.PRO02.1600</b>  | Dimensioni 22 x 10 x 2.000 mm.....   | pz.  | -     |
| <b>Dak.O.PRO02.1601</b>  | Dimensioni 32 x 15 x 2.000 mm.....   | pz.  | -     |
| <b>Dak.O.PRO02.1602</b>  | Dimensioni 27 x 14 x 2.000 mm.....   | pz.  | -     |
| <b>Dak.O.PRO02.1600P</b> | Dimensioni 22 x 10 x 2.000 mm.....   | pz.  | -     |
| <b>Dak.O.PRO02.1601P</b> | Dimensioni 32 x 15 x 2.000 mm.....   | pz.  | -     |