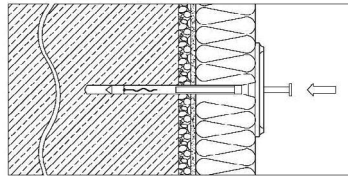
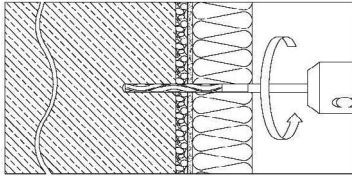


ANCHOR SGR-AV (SCREWING STEEL NAIL)

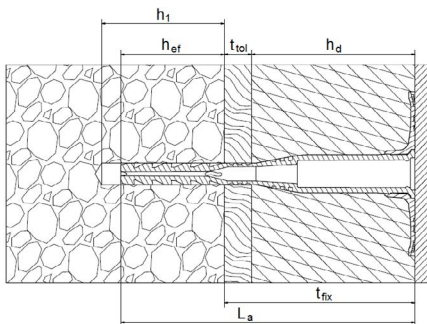


INDEX

1. Code registry
2. Use
3. Technical specification

1. CODE REGISTRY

Code	Description	Dimensions (mm)	Pkg.	Pallet	Weight
TER11-3110AV	Anchors SGR-AV	110	100 pcs	9.000 pcs	24 gr./pc.
TER11-3130AV	Anchors SGR-AV	130	100 pcs	9.000 pcs	27 gr./pc.
TER11-3150AV	Anchors SGR-AV	150	100 pcs	9.000 pcs	30 gr./pc.
TER11-3170AV	Anchors SGR-AV	170	100 pcs	7.200 pcs	33 gr./pc.
TER11-3190AV	Anchors SGR-AV	190	100 pcs	7.200 pcs	36 gr./pc.
TER11-3210AV	Anchors SGR-AV	210	100 pcs	5.400 pcs	39 gr./pc.
TER11-3230AV	Anchors SGR-AV	230	100 pcs	5.400 pcs	42 gr./pc.
TER11-3250AV	Anchors SGR-AV	250	100 pcs	5.400 pcs	45 gr./pc.
TER11-3270AV	Anchors SGR-AV	270	100 pcs	5.400 pcs	48 gr./pc.
TER11-3290AV	Anchors SGR-AV	290	100 pcs	4.500 pcs	51 gr./pc.
TER11-3310AV	Anchors SGR-AV	310	100 pcs	4.500 pcs	54 gr./pc.



Legend:

- h_1 = Hole Depth
- h_{ef} = Anchoring Depth
- t_{fix} = Fixable thickness ($h_d + t_{toi}$)
- h_d = Insulating panel thickness
- t_{toi} = Adhesive thickness or old plaster thickness
- L_a = Anchor Length

Anchor Length $L_a = t_{fix} + h_{ef} = h_d + t_{toi} + h_{ef}$

The anchor length (L_a) must be deep enough to ensure the minimum depth of anchorage to the wall (h_{ef}) and must necessarily consider the presence of pre-existing layers of plaster and adhesive (t_{toi}).

Maximum thickness of the insulating panel $h_{dmax} = L_a - t_{toi} - h_{ef}$

ANCHOR SGR-AV (SCREWING STEEL NAIL)

Declared Performances		
N_{RK} Base material	KN	Technical specification
Cat. A Concrete - C 12/15 (EN 206-1) - C 16/20-C50/60 (EN 206-1)	0,4 0,6	pt. 5.4.2 ETAG 014
Cat. B Solid masonry (EN 771-1)	0,6	pt. 5.4.2 ETAG 014
Cat. C Hollow or perforated masonry (EN 771-1)	0,5	pt. 5.4.2 ETAG 014
Cat. D LAC Lightweight aggregate concrete (EN 1520)	0,5	pt. 5.4.2 ETAG 014
Cat. E Autoclaved aerated concrete (EN 771-4)	0,3	pt. 5.4.2 ETAG 014

N_{RK} Load voltage resistance

CERTIFICATIONS

Certified according to ETAG014.
ETA-17/0606

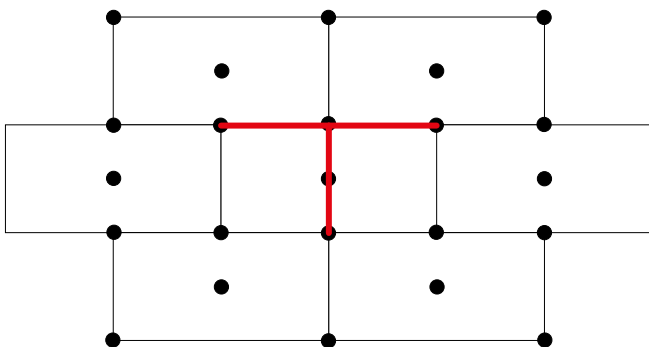
The base materials that have been certified are:

- cat. A (concrete)
- cat. B (solid masonry)
- cat. C (hollow or perforated masonry)
- cat. D (lightweight aggregate concrete)
- cat. E (autoclaved aerated concrete)

2. USE

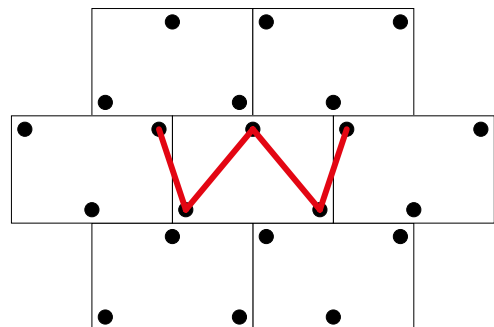
The anchors must be placed where the adhesive has been applied. This solution will increase the adhesive cohesion strength generated by the anchor. The positioning of anchors can be done according to the following tessellation schemes.

TESSELEATION SCHEME "T" SHAPE



Polystyrene panels (EPS) with 6 anchors/sqm.
In the tessellation scheme "T" there will be an anchor positioned on every panel intersection, plus one more anchor positioned on the center of each panel

TESSELEATION SCHEME "W" SHAPE



Mineral wool panels (MW) with 6 anchors/sqm.
In the tessellation scheme "W" each insulating panel is fixed with 3 anchors.

ANCHOR SGR-AV (SCREWING STEEL NAIL)

3. TECHNICAL SPECIFICATION

Specification	Description	Unity	Price
Dak.B.TER11.3xxxAV	<p>Supply and installation of 8 mm hole percussion mechanical fixing, with 60 mm head, improved grip and polyamide nail. Certified according to ETAG014. ETA-17/0606</p> <p>Main news of this new range of products are:</p> <ul style="list-style-type: none"> · Pre-assembled nail, for a faster installation. · Variable section of the anchor's body (xing diameter 8 mm). · Asymmetric expansion of the anchor's body. · Customizable anchor's head. · Packaged in box of 100 pcs each. <p>Body and head made of PP (polypropylene), nails made of steel and nail cap in polyamide (PA) Used for the mechanical anchoring of insulating panels, mineral wool and for the main types of masonry, supporting its load and tensile stress. The pre-assembled nail facilitates and accelerates the installation of the anchor."tear-off" stress.</p>		
Dak.B.TER11.3110AV	Lenght 110 mm - Head 60 mm - ø 8.....	pc.	-
Dak.B.TER11.3130AV	Lenght 130 mm - Head 60 mm - ø 8.....	pc.	-
Dak.B.TER11.3150AV	Lenght 150 mm - Head 60 mm - ø 8.....	pc.	-
Dak.B.TER11.3170AV	Lenght 170 mm - Head 60 mm - ø 8.....	pc.	-
Dak.B.TER11.3190AV	Lenght 190 mm - Head 60 mm - ø 8.....	pc.	-
Dak.B.TER11.3210AV	Lenght 210 mm - Head 60 mm - ø 8.....	pc.	-
Dak.B.TER11.3230AV	Lenght 230 mm - Head 60 mm - ø 8.....	pc.	-
Dak.B.TER11.3250AV	Lenght 250 mm - Head 60 mm - ø 8.....	pc.	-
Dak.B.TER11.3270AV	Lenght 250 mm - Head 60 mm - ø 8.....	pc.	-
Dak.B.TER11.3290AV	Lenght 250 mm - Head 60 mm - ø 8.....	pc.	-
Dak.B.TER11.3310AV	Lenght 250 mm - Head 60 mm - ø 8.....	pc.	-