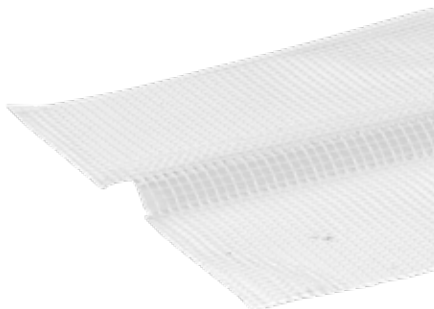


PRE-FORMED MESH FOR GROOVES



INDEX

1. Code Registry

2. Use

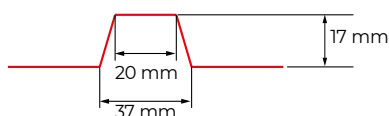
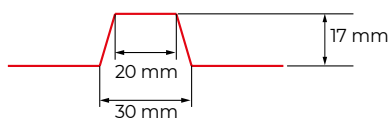
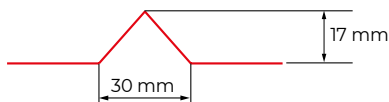
3. Technical specification

1. CODE REGISTRY

Code	Description	Dimensions (mm)	Weight	Colour	Pkg. / Pallet
ZIN33-1629	Pre-formed mesh for grooves	20/30/17 x 2.000	2,00 kg/box.	White	20 m / 50 box.
ZIN33-1630	Pre-formed mesh for grooves	20/30/17 x 2.000	3,00 kg/box.	White	20 m / 50 box.
ZIN32-1631	Pre-formed mesh for grooves	20/37/17 x 2.000	4,00 kg/box.	White	20 m / 50 box.

MATERIAL

Made of fiber glass Adfords Saint-Gobain E type, impregnated with anti-alkaline resins SBR, mesh 3,5 x 3,8 mm and weight of 165 gr/m².



Characteristics	Units Description	R131	
		Warp	Weft
Setting	per 10 cm	25 x 2	20,5
Standard height	cm	110	
Roll length	m	50	
Treated Fabric Thickness	mm	0,52	
Loom state Fabric Weight	g/m ²	131	
Treated Fabric Weight	min g/m ²	160 ± 5% (max 168 gr. - min 152 gr.)	
Combustible Matter Content (LOI)	% of mass	20%	
Treatment type		alkaliresistant without emollient, obstructing yarn drifting	
Square Dimension	mm	3,5 x 3,8	

Tensile strength (TS) and elongation:

Minimum individual tensile strength (N/50 mm) and maximum elongation (%) when reaching minimum tensile strength is ascertained according DIN EN ISO 13934 – 1 as per below.

Deposition method	Tensile strength		Elongation
	Nominal value	Individual value	Average value
Standard condition	2.000 / 2.200	1.900 / 1.900	3,8 / 3,8
5 % NaOH Solution	1.140 / 1.300	1.200 / 1.200	3,5 / 3,5
Fast Test (6 hours)	1.500 / 1.700	1.250 / 1.250	3,5 / 3,5
3 ions solution		1.000 / 1.000 50 % / 50 %	

Tolerances:

Setting: ± 5% in Warp and Weft
Width: ± 1%
Length: ± 2%
LOI: ± 3%

Quality Inspection:

Quality inspection, sampling and material acceptance, follows the Customer Acceptance Standard No. 0326.

Packaging:

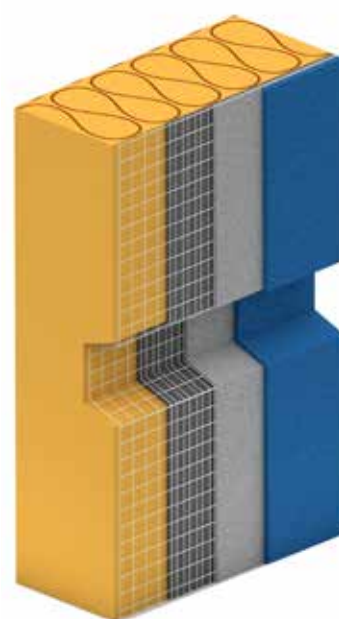
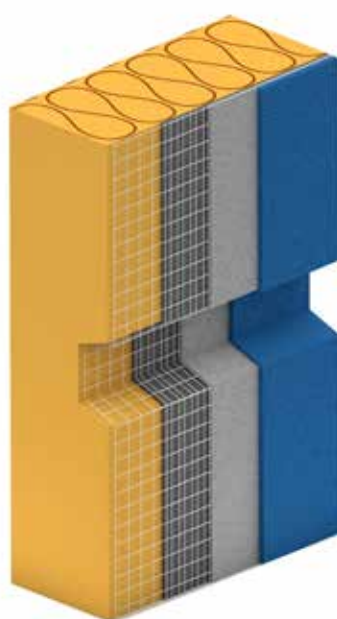
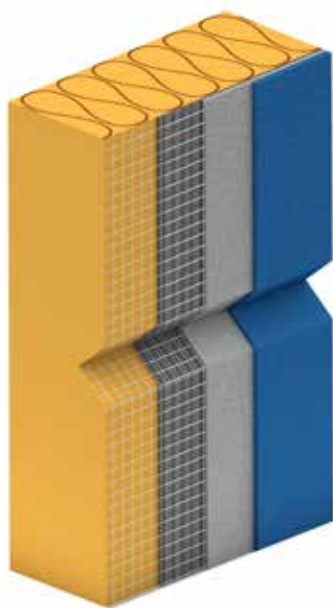
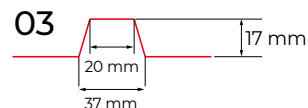
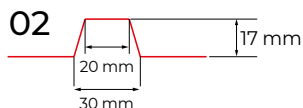
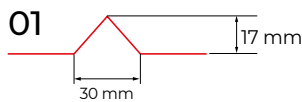
The rolls of fabrics are packed vertically in a cardboard box, on a wooden pallet.

A precise method of packing is mentioned in the works standard for packing and can vary based on a customer request.

Storing:

Packed rolls are to be stored in dry rooms. Storing temperature is from -10 °C to +50°C.

PRE-FORMED MESH FOR GROOVES



2. USE

Used for reinforcement of the grooves into the insulating coated panels, ensuring the continuity of the system.

3. TECHNICAL SPECIFICATION

Specification	Description	Unity	Price
Dak.B.ZIN33.16xx	Supply and installation of fiber glass mesh for grooves white colour (R131, corresponding to the net weight per square meter of the fiber glass mesh without resin). Available in the following dimensions mm 20/30/17, 20/30/17 and 30/30/17 mm. Packed in boxes. Made of fiber glass Adfors Saint-Gobain E type, impregnated with anti-alkaline resins SBR, mesh 3,5 x 3,8 mm and weight of 165 gr/m ² . Used for reinforcement of the grooves into the insulating coated panels, ensuring the continuity of the system.		
Dak.B.ZIN33.1629	Dimension 20/30/17 x 2.000 mm.....	box.	-
Dak.B.ZIN33.1630	Dimension 20/30/17 x 2.000 mm.....	box.	-
Dak.B.ZIN33.1631	Dimension 20/37/17 x 2.000 mm.....	box.	-