

OPTIMA NET 150 (WHEELBASE 4,70 x 4,0 ± 0,5 MM - 150 GR)



INDEX

1. Code registry
2. Use
3. Technical specification

1. CODE REGISTRY

Code	Description	Measure (m)	Weight	Colour	Pkg. / Pallet
RET01-1160E*	Net Etag 004 150	1,00 x 50	150 gr./m ²	White	50 m ² / 1.650 m ²

* Alternative codes: 1160ED, 1160EV, 1160EDN, 1160EKN

MATERIAL

Made of glass fibernet type E, impregnated with antialcaline SBR resins and weight of 160 gr / m².
The net is available in different colors or with different brands (Optima, Optimax, Optinet, Optimesh or other customization).

Features	Unit of measure	RET01-1160E*	
		Warp	Weft
Setting	for 10 cm	21 x 2	16,5
Standard Height	cm	100	
Roll Length	m	50	
Treated Fabric Thickness	mm	0,6	
Treated Fabric Weight	g/m ²	150 ±5%	
Combustible Content (LOI)	% of mass	16	
Dimensions Wheelbase	mm	4,7 x 4,0 ± 5 mm	

Tensile strength (TS) and elongation:
Minimum tensile strength (N/50 mm) and maximum elongation (%), is ascertained according to DIN EN ISO 13934-1 as shown below.

Deposition method	Resistenza alla Trazione	
	Nominal value	Individual value
Condizioni Standard	2.100 / 1.800	2.000 / 1.700

Tolerances:
 Setting: ± 5% in Warp and Weft
 Height: ± 1%
 Length: ± 2%
 LOI: ± 3%

Quality inspection
 The way of quality control, taking samples and shooting material, is according to standard of 0326 works.

Packing:
 The rolls are packed vertically in cardboard boxes, on a pallet.

Magazine:
 Rolls must be stored in dry places. Storage temperature from -10°C to + 50 °C.

CERTIFICATION

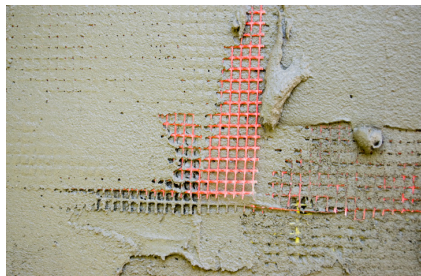
Certified TZUS n. 050-023480.

RETE OPTIMA 150 (INTERASSE 4,70 x 4,0 ± 0,5 MM - 150 GR)

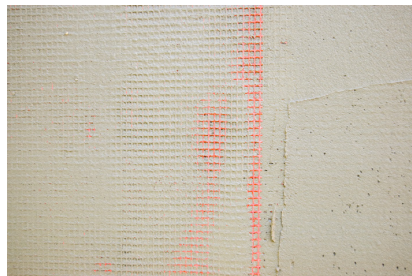
INSTALLATION

The fiberglass reinforcement mesh must be completely immersed in the layer of smoothing mortar, spread over the insulating panels. Proceed by unrolling the rolls of mesh from top to bottom, covering them with mortar with the help of a trowel or a spatula, taking care to overlap them for at least 10 cm, avoiding the formation of bubbles or folds.

OVERLAP



DURING INSTALLATION



2. USE

Used in ETICS thermal insulation systems as reinforcement of the smoothing layer, in order to absorb and evenly distribute the mechanical stresses to which the system may be subjected.

3. TECHNICAL SPECIFICATION

Item	Description	U.M.	Price
Dak.B.RET01.1160E	<p>Supply and installation of anti-cracking fiberglass mesh for "a cappotto" insulation, made of E-glass fiber. The weight of the treated fabric is 150 gr/m² (with an appreciable deviation of 5%). The mesh size must be equal to 4,70 x 4,0 mm.</p> <p>The mesh must be placed in the layer of adhesive, making sure that it is perfectly embedded using a notched trowel or float for this purpose. The superimpositions of the various layers of net must never be less than 10 cm.</p> <p>The surface so obtained must be further smoothed and levelled in order to receive, once cured, the further coat of gravel plaster and painting.</p> <p>In yard the net will be delivered in incelophanati rolls, bearing a control code and sheet with an outline description of the product. The dimensions of the roll are equal to 1.00 m in height by 50 m in length.</p> <p>Used in thermal insulation systems, ETICS, as reinforcement of the smoothing layer in order to absorb and evenly distribute the mechanical stresses to which the system may be subjected.</p> <p>Dimensions 1,00 x 50 m.....</p>	m ²	-