

RETRACTABLE WALL STAIRCASE AND ACCESSORIES



INDEX

1. Code Registry
2. Use
3. Accessories
4. Technical Specification

1. CODE REGISTRY

Code	Product	Measure (mm)	Weight	Pkg. / Pallet
SCA01-590P/4	Retractable wall staircase	700 x 900 x 3.000	45 kg/pc.	1 pc. / 4 pc.
SCA01-590P/5	Retractable wall staircase	700 x 1.000 x 3.000	45 kg/pc.	1 pc. / 4 pc.
SCA01-590P/6	Retractable wall staircase	700 x 1.100 x 3.000	45 kg/pc.	1 pc. / 4 pc.
SCA01-590P/7	Retractable wall staircase	700 x 1.200 x 3.000	45 kg/pc.	1 pc. / 4 pc.

MATERIAL

The entire scale is made of tropicalized steel, powder sealed steel while the frame is made of galvanized steel, white enamelled finish.

2. USE

Usually used inside homes to reach floors without the encumbrance of a fixed ladder.
The "knee" folding system to make it disappear in the ceiling makes it suitable for narrow spaces.

RETRACTABLE WALL STAIRCASE AND ACCESSORIES

"Supra" is made of tropicalized and hot enamelled steel, with bolted steps to allow for replacement and/or addition.

Available in a wide range of sizes, Supra is equipped with a fixing system that allows it to be positioned even on uneven slabs.

The special shape of the steps is extremely effective as a holding aid when using the ladder. The user can hold on symmetrically, either to the right or to the left, maintaining a position very close to the ladder axis, all with the benefit of feeling much safer while using it.

N.B.: Tread width 80 mm.

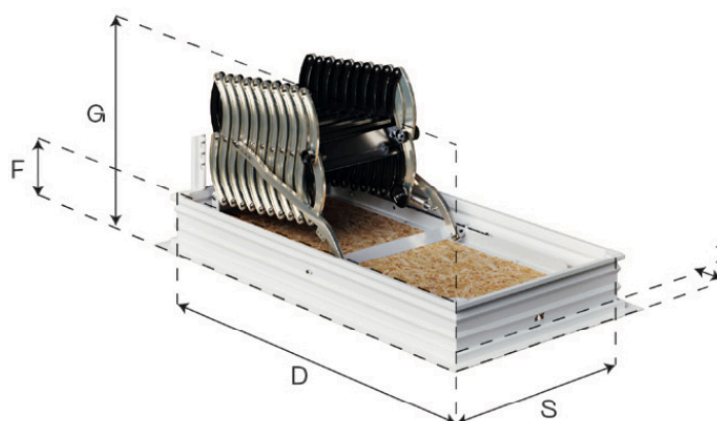
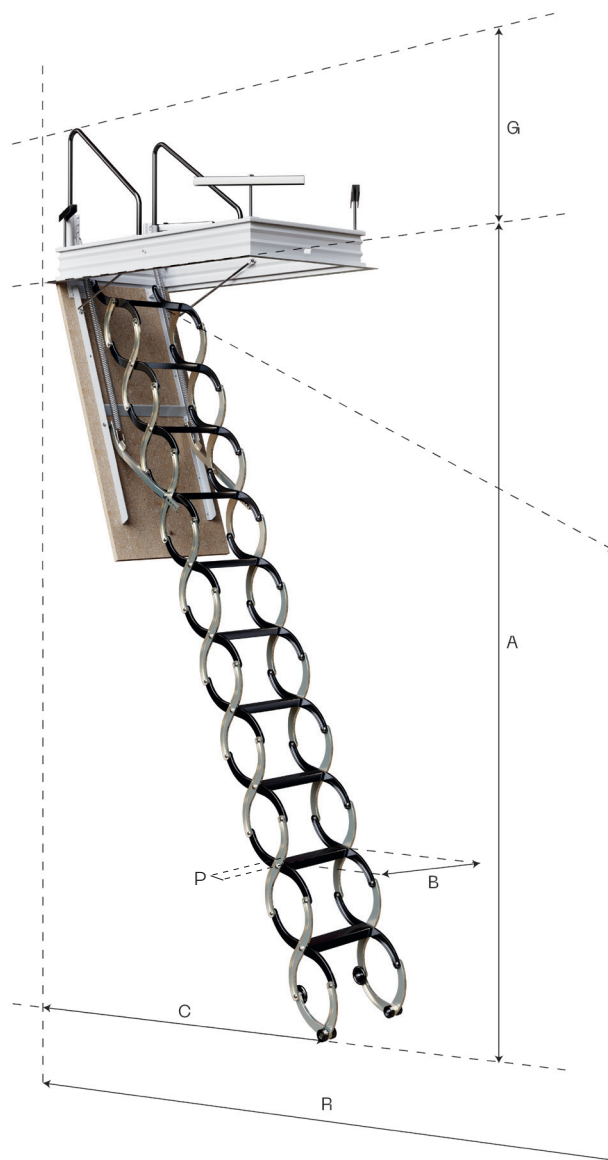
The steel is tropicalised and hot enamelled.

It is usually used inside houses to reach floors without taking up too much space with a fixed ladder.

Minimum hole size (l x w): 700 x 500 mm
 Maximum hole size (l x w): 1400 x 1000 mm
 Maximum roof strength: 1000
 It can be made to measure
 Maximum capacity: 150 kg

Approximate opening (l x w)			
Code	l x w (mm)	A (mm)	B (mm)
SCA01-590P/4	900 x 700	2200 x 3200	400
SCA01-590P/5	1000 x 700	2200 x 3200	400
SCA01-590P/6	1100 x 700	2200 x 3200	400
SCA01-590P/7	1200 x 700	2200 x 3200	400

Footprint: dimensions C and R with different heights (A)		
A	C	R
3200	1700	2100
3100	1800	2000
3000	1400	1900
2900	1500	1850
2800	1600	1800
2700	1300	1750
2600	1400	1700
2500	1500	1650
2400	1100	1550
2300	1200	1500
2200	1300	1400



A Height from floor to ceiling

B Step width

C Distance stair base hole

F Frame height

G Height of closed system

I Exposed frame width

R Maximum stair opening space

P Tread 8 cm

w Width of ceiling hole

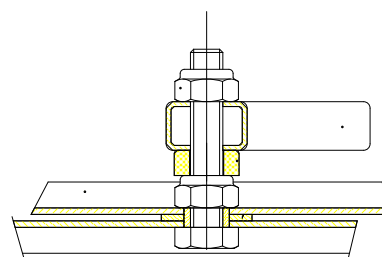
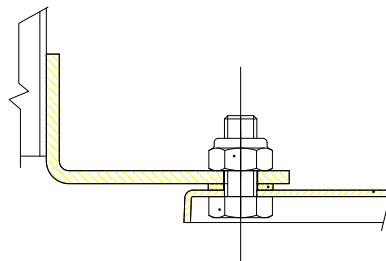
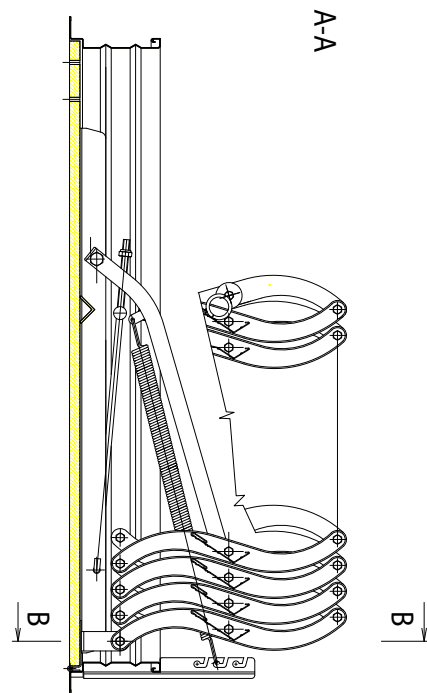
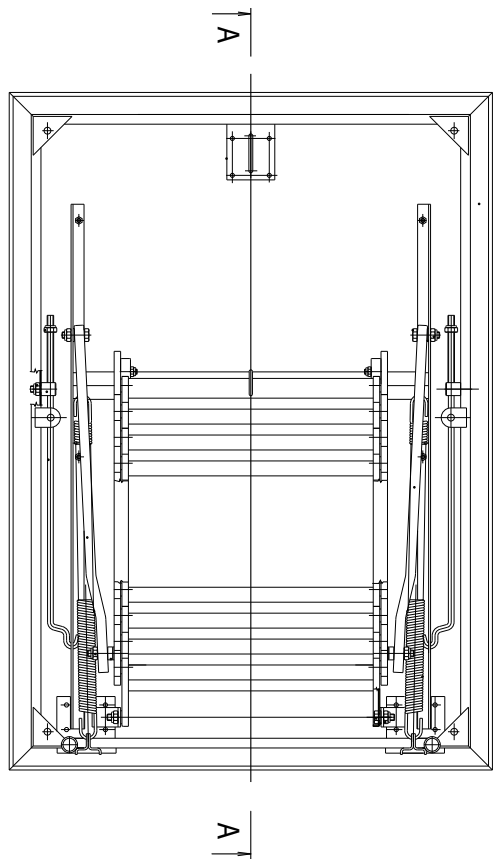
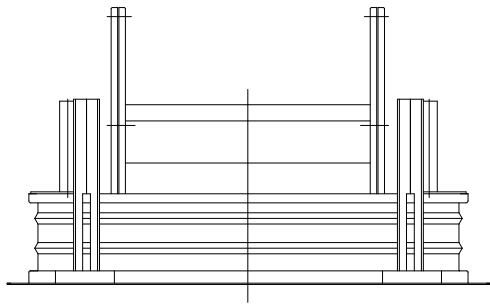
l Depth of ceiling opening

F = 140

G = 400

I = 24

RETRACTABLE WALL STAIRCASE AND ACCESSORIES

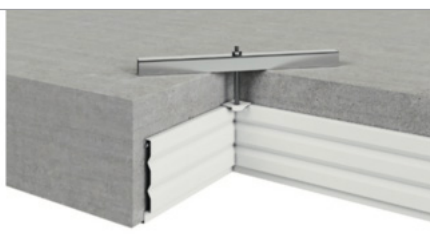


RETRACTABLE WALL STAIRCASE AND ACCESSORIES

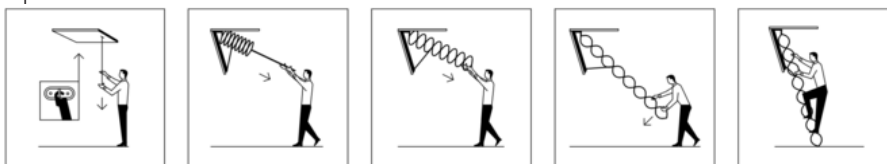
Installation with wall thickness less than the frame



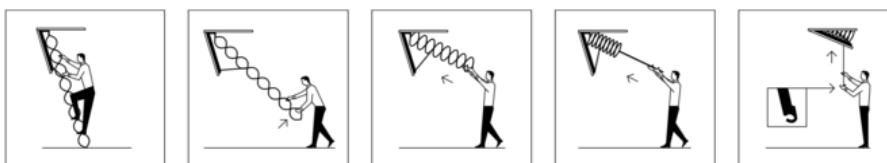
Installation with wall thickness greater than the frame



Apertura



Chiusura



3. ACCESSORIES



The step is used to increase the floor-to-ceiling height (allows height increase up to 250 mm). It is recommended to add no more than one.

The landing handle facilitates access to the ceiling and/or the start of the descent, and springs can be used instead of mounted ones.

Code	Description	Measures (mm)	Weight	Pkg. / Pallet
SCA01-590/10	Gradino per scala da 500 (pedata da 8 cm)	300	1,30 kg/pc.	1 pc. / - pc.
SCA01-590/11	Gradino per scala da 600 (pedata da 8 cm)	420	2,00 kg/pc.	1 pc. / - pc.
SCA01-590/9	Gradino per scala da 700 (pedata da 8 cm)	400	2,00 kg/pc.	1 pc. / - pc.
SCA01-590/P	Maniglione da sbarco (Coppia)	L 550 X A 20 X P 450	0,75 kg/pc.	1 pc. / - pc.
SCA01-590/B	Bastoni per Scala Retrattile	L 40 X A 20 X P 680	0,63 kg/pc.	1 pc. / - pc.
SCA01-590/S	Serratura per Scala Retrattile	L 80 X A 80 X P 80	0,25 kg/pc.	1 pc. / - pc.
SCA01-590/M	Molle per Scala Retrattile (Coppia)	L 70 X A 40 X P 530	1,1 kg/pc.	1 pc. / - pc.

MATERIALE

Made of tropicalized powder-coated steel.

RETRACTABLE WALL STAIRCASE AND ACCESSORIES

4. TECHNICAL SPECIFICATION

Item	Description	Unit	Price
Dak.I.SCA01.590P/x	Supply and installation of stair pack consisting of tubular elements and tread made of pressed sheet metal with anti-slip texture, galvanised and powder-coated. Step width 370 mm. Individually packaged, fitted with lock and bar. Available in floor opening dimensions 700 x 900 x 2,800, 700 x 1,000 x 3,000, 700 x 1,100 x 3,000, 700 x 1,200 x 3,000 mm. Made of powder-coated galvanised steel. Usually used inside homes to reach floors without the encumbrance of a standing ladder. The "knee" folding system to make it disappear underneath makes it suitable for use in confined spaces.		
Dak.I.SCA01.590P/4	Dimensions 700 x 900 x 3.000 mm.....	pc.	-
Dak.I.SCA01.590P/5	Dimensions 700 x 1.000 x 3.000 mm.....	pc.	-
Dak.I.SCA01.590P/6	Dimensions 700 x 1.100 x 3.000 mm.....	pc.	-
Dak.I.SCA01.590P/7	Dimensioni 700 x 1.200 x 3.000 mm.....	pc.	-

Item	Description	Unit	Price
Dak.I.SCA01.590/x	Additional step for "Supra" stairs, both floor and wall mounted, available in widths 300, 320 and 400 mm. Landing handle to facilitate climbing. Stairs, springs and lock. Made of tropicised, powder-coated steel. Used to increase the floor-to-ceiling height (allows height increase up to 250 mm). It is advisable to add no more than one. The landing handle facilitates access to the ceiling and/or the start of the descent. Springs to replace mounted ones.		
Dak.I.SCA01.590/10	Dimensions 300 mm.....	pc.	-
Dak.I.SCA01.590/11	Dimensions 320 mm.....	pc.	-
Dak.I.SCA01.590/9	Dimensions 400 mm.....	pc.	-
Dak.I.SCA01.590/P	pc.	-
Dak.I.SCA01.590/B	pc.	-
Dak.I.SCA01.590/S	pc.	-
Dak.I.SCA01.590/M	pc.	-