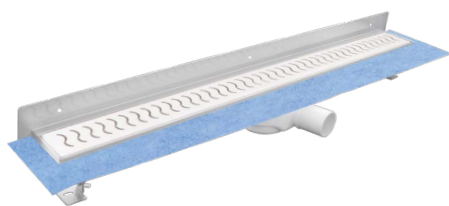


CHANNEL DAKUA+ WITH STAINLESS STEEL GRATING WAVE WALL



INDEX

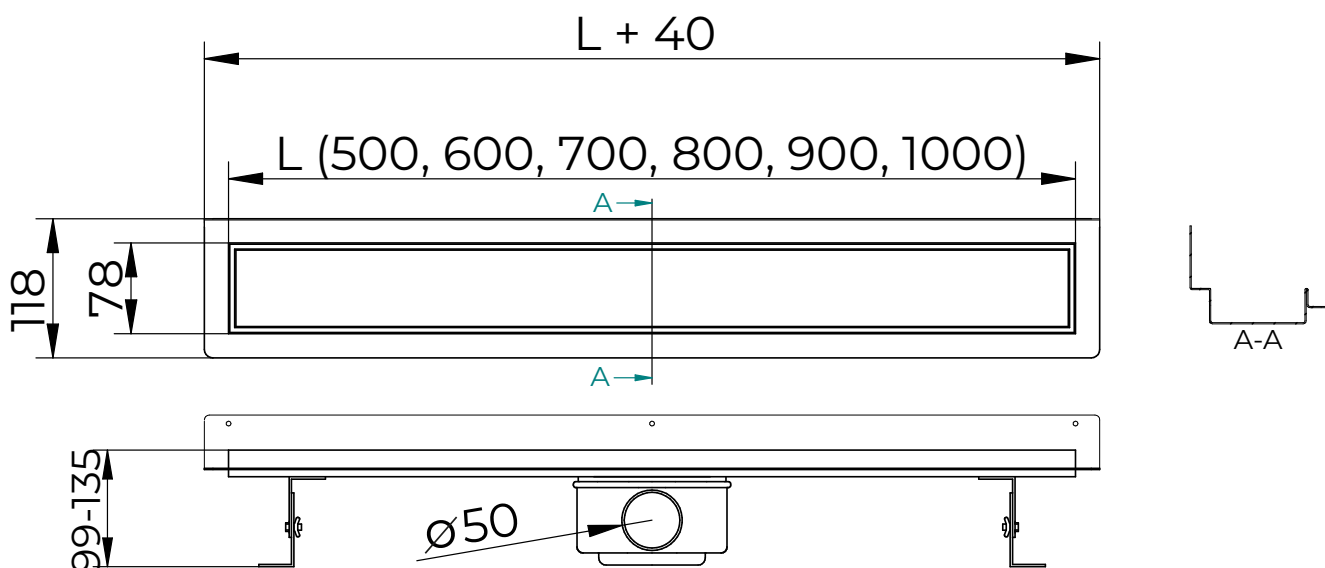
1. Code Registry
2. Use
3. Technical Specification

1. Code Registry

Code	Description	Dimension (mm)	Weight	Colour	Pkg. / Pallet
POZ93-119500/O	Kit - Channel Dakua+ with Stainless Steel Grating Wave Wall - 500	78 x 500	1,80 kg/pcs	Steel	1 pcs / 108 pcs
POZ93-119600/O	Kit - Channel Dakua+ with Stainless Steel Grating Wave Wall - 600	78 x 600	2,00 kg/pcs	Steel	1 pcs / 90 pcs
POZ93-119700/O	Kit - Channel Dakua+ with Stainless Steel Grating Wave Wall - 700	78 x 700	2,30 kg/pcs	Steel	1 pcs / 81 pcs
POZ93-119800/O	Kit - Channel Dakua+ with Stainless Steel Grating Wave Wall - 800	78 x 800	2,60 kg/pcs	Steel	1 pcs / 54 pcs
POZ93-119900/O	Kit - Channel Dakua+ with Stainless Steel Grating Wave Wall - 900	78 x 900	2,90 kg/pcs	Steel	1 pcs / 55 pcs
POZ93-1191000/O	Kit - Channel Dakua+ with Stainless Steel Grating Wave Wall - 1000	78 x 1000	3,20 kg/pcs	Steel	1 pcs / 56 pcs

MATERIAL

Grating and channel body made of AISI 304 stainless steel, trap siphoned element and outlet body made of Abs, waterproof polyester fabric.



CHANNEL DAKUA+ WITH STAINLESS STEEL GRATING WAVE WALL

2. Use

This channel has to be installed on the floor, for the collection of shower/toilet waters. It guarantee aesthetic uniformity, ease of positioning on the ground. Positioning itself against the wall at the connection point between floor and wall.

3. TECHNICAL SPECIFICATION

Specification	Description	Unity	Price
Dak.D.POZ93.119x00/O	Supply and installation of drainage Channel with a modern, essential and funtional design. The block body channel is made up of AISI 304 stainless with a 90° bended external edge that allow to be installed closed to the wall. Moreover, thanks to the absence of welds and screws, ensures easy cleaning and high hygiene standards. The body channel, contains a siphon, a removable basket and a 360° adjustable and removable gasket. The flow rate (44 litres/min) is high, even with lowered heights. The interchangeable grating has a "wave shape opening" design and it is available in polished stainless steel. The kit is ready for installation, with the provided preassembled grating and includes a waterproof pre-cut polyester sheet, which is shaped to the edge of the channel to protect it against infiltration under the floor. Grating and channel body made of AISI 304 stainless steel, trap siphoned element and outlet body made of Abs, waterproof polyester fabric. This channel has to be installed on the floor, for the collection of shower/toilet waters. It guarantee aesthetic uniformity, ease of positioning on the ground. Positioning itself against the wall at the connection point between floor and wall.		
Dak.D.POZ93.119500/O	Grating Wave - 500 mm.....	pcs	-
Dak.D.POZ93.119600/O	Grating Wave - 600 mm.....	pcs	-
Dak.D.POZ93.119700/O	Grating Wave - 700 mm.....	pcs	-
Dak.D.POZ93.119800/O	Grating Wave - 800 mm.....	pcs	-
Dak.D.POZ93.119900/O	Grating Wave - 900 mm.....	pcs	-
Dak.D.POZ93.1191000/O	Grating Wave - 1.000 mm.....	pcs	-