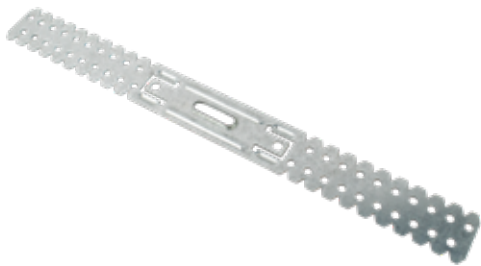


UNIVERSAL SPACER FOR PROFILE



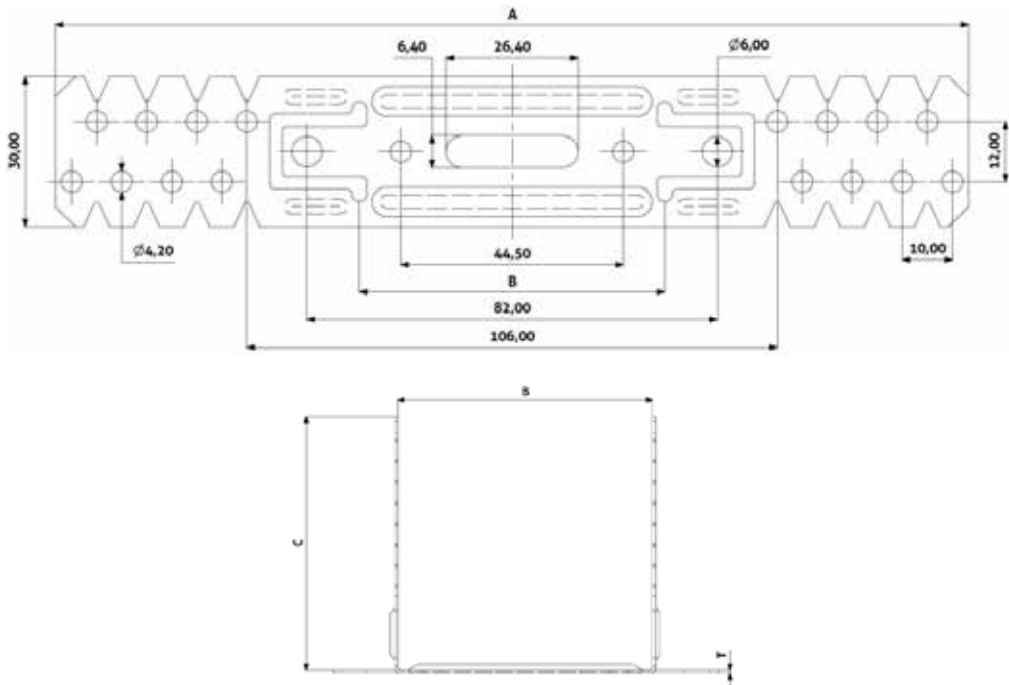
INDEX

- 1. Registry code
- 2. Description
- 3. Use
- 4. Features
- 5. Technical specification

1. REGISTRY CODE

Code	Description	Measures (mm)	Weight (kg/pz.)	Color	Pkg. / Pallet
GAN01-5117/12	Universal spacer for profile 60 x 120 mm	60 x 120	0,036	Gray	100 pcs. / 10.500 pcs.
GAN01-5117/20	Universal spacer for profile 60 x 200 mm	60 x 200	0,036	Gray	100 pcs. / 6.600 pcs.

MATERIAL DX51 laminated sheet metal



Codice	T	A	B	C
GAN01-5117/12	1,00 mm	300 mm	60 mm	120 mm
GAN01-5117/20	1,00 mm	460 mm	60 mm	200 mm.

UNIVERSAL SPACER FOR PROFILE

2. DESCRIPTION

This product is made of galvanized steel with a thickness of 1 mm. It is designed for use in the construction of clad gypsum counterwalls, offering wall spacing options of 60 or 120 mm. The bracket attaches to metal profiles using metal structure screws, ensuring a secure and stable installation.

3. USE

This product is used for mounting metal profiles in vertical, horizontal or inclined constructions of buildings. It is particularly suitable for the installation of plasterboard ceilings, allowing secure and adjustable attachment of profiles. The brackets are ideal for a wide range of applications in commercial, industrial, and residential buildings, where a reliable and versatile solution for handling complex interior and interior structures is required.

4. FEATURES

Materiale	DX51 laminated sheet metal	
Rivestimento	Zinc - min Z100	EN 10327
Spessore	1,00 mm	EN 10143
Larghezza	50 o 60 mm	
Distanziatura dalla parete	3 - 120 mm 3 - 200 mm	
Carico ammissibile	0,50 kN	
Reazione al fuoco	A1	EN 14195
Durabilità	B Class	
Scatola	100 pcs.	

5. TECHNICAL SPECIFICATION

Item	Description	Unit	Price
Dak.B.GAN01.5117/X	Supply and installation of plasterboard ceiling brackets for profile 50. Width 50 or 60 mm, length 120 or 200. Packaged in boxes of 100 pcs. Made of galvanized steel sheet. Used for mounting metal profiles in vertical, horizontal or inclined constructions of buildings.	pkg.	-