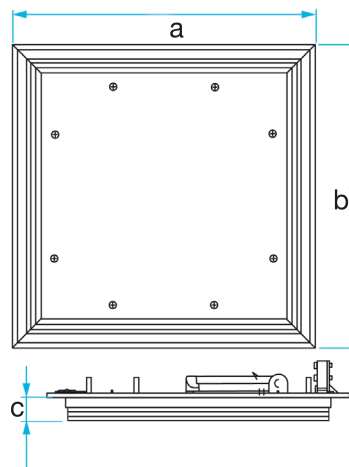
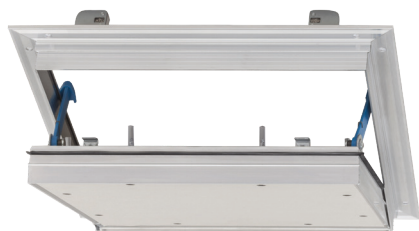


ALUMATIC ONE SIDE EI60 - EI90



Tested for flame from below (room side) according to EN1634-1

INDEX

1. Code registry
2. Description
3. Use
4. Dimensions
5. Mounting instructions
6. Technical specification

1. CODE REGISTRY

Code	Product	Thickness	Measures (mm)	Pkg.	Pallet	Weight
		c	a x b			
GAN01-6560	Alumatic EI60 ONE SIDE 300 x 300	30 mm	300 x 300	1 pc.	12 pcs.	
GAN01-6561	Alumatic EI60 ONE SIDE 400 x 400	30 mm	400 x 400	1 pc.	8 pcs.	
GAN01-6562	Alumatic EI60 ONE SIDE 500 x 500	30 mm	500 x 500	1 pc.	7 pcs.	
GAN01-6563	Alumatic EI60 ONE SIDE 600 x 600	30 mm	600 x 600	1 pc.	5 pcs.	
GAN01-6568	Alumatic EI90 ONE SIDE 300 x 300	40 mm	300 x 300	1 pc.	15 pcs.	
GAN01-6569	Alumatic EI90 ONE SIDE 400 x 400	40 mm	400 x 400	1 pc.	12 pcs.	
GAN01-6570	Alumatic EI90 ONE SIDE 500 x 500	40 mm	500 x 500	1 pc.	8 pcs.	
GAN01-6571	Alumatic EI90 ONE SIDE 600 x 600	40 mm	600 x 600	1 pc.	7 pcs.	

MATERIAL Aluminium frame with intumescent coating and fire-resistant plasterboard panel.

2. DESCRIPTION

The Alumatic One Side inspection hatch is especially designed for use in self-supporting fireproof ceilings and tested EI60/ EI90 (depending on model) for flame resistance on the room side. It maintains air-tightness and thermal insulation for 60 (EI60) or 90 minutes (EI90) as per test report no. RS19-064 issued by the CSTB according to UNI EN 13501-2.

The aluminium frame profile is equipped with an intumescent band. The hatch cover is equipped with two DF fireproof plasterboard sheets and a lip seal to prevent the passage of smoke. Two safety catches of fireproof plastic, which allow the door to be retained when opened, complete the equipment. The hatch is easily removable from the frame and allows for quick repositioning.

Individually packaged in a box.

3. USE

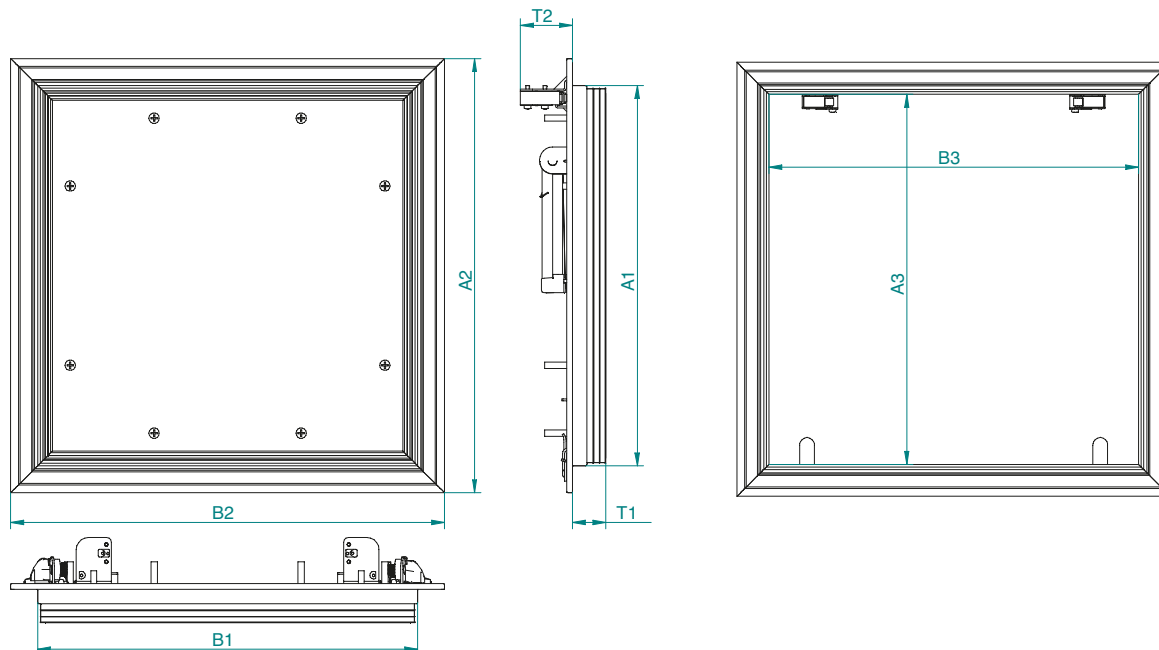
Used in self-contained ceilings with EI60 fire protection

(E = aptitude not to allow or produce flames, vapours or hot gases on the unexposed side; I = aptitude to reduce heat transmission).

Quick and easy installation solution for room-side fire tested ceilings with smoke seals around the entire sash perimeter. Does not require additional protective panels on the top side.

ALUMATIC ONE SIDE EI60 - EI90

4. DIMENSIONS



Article code	Nominale size A x B(V)	Dimension A1 x B1	Maximum footprint A2 x B2	Opening width A3 x B3	T1	T2	Certificate
Fire resistance class EI 60							
GAN01-6560	300 x 300	297 x 297	339 x 339	289 x 289	31	41	EI60
GAN01-6561	400 x 400	397 x 397	439 x 439	389 x 389	31	41	EI60
GAN01-6562	500 x 500	497 x 497	539 x 3539	489 x 489	31	41	EI60
GAN01-6563	600 x 600	597 x 2597	639 x 639	589 x 589	31	41	EI60
Fire resistance class EI 90							
GAN01-6568	300 x 300	301 x 301	343 x 343	292 x 292	41,5	41	EI90
GAN01-6569	400 x 400	401 x 401	443 x 443	392 x 392	41,5	41	EI90
GAN01-6570	500 x 500	501 x 501	543 x 543	492 x 492	41,5	41	EI90
GAN01-6571	600 x 600	601 x 601	643 x 643	592 x 592	41,5	41	EI90

ALUMATIC ONE SIDE EI60 - EI90

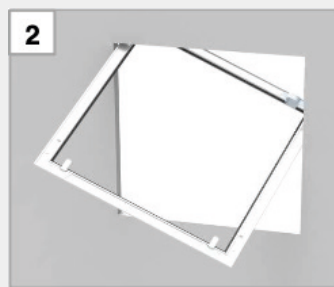
5. MOUNTING INSTRUCTIONS



1

Mark the structural dimension and cut an opening into the wall

(approx. 3-5mm larger than the nominal dimensions)



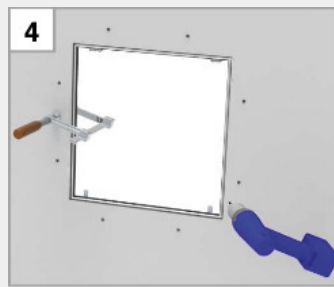
2

Hang out the detachable flap lid, insert diagonally the panel frame through the opening and place it there



3

Adjust the frame (check angularity), fasten it and mark the drill holes, Drill distance ≤ 200 mm. Drill distance in case of access panel Alumatic "air-tight and dust-tight": ≤ 100 mm.



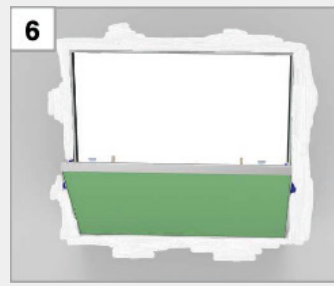
4

Drill with a drilling machine of 3mm through the gypsum and the wings of the frame then place the screws. Screw the mounting frame and fit the screws with the protective caps that are supplied along.



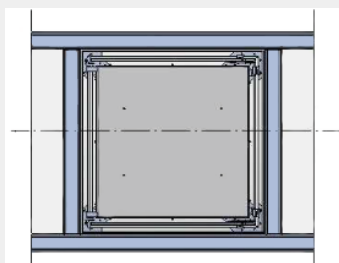
5

Fill the mounting frame and the flap lid separately using a joint filler. Clean the metallic interior and side surfaces of the mounting frame and the door leaf after further coating of putty and paint residues!



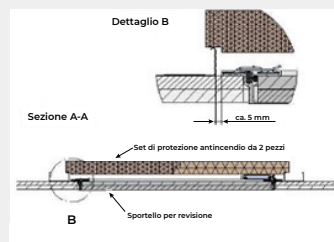
6

Then perform functional test (insert, close, open). Fit the flap lid, fix the arresting device and close the flap lid.



Install the flap as shown in the sketch.

It is important to screw the profile support pro ceiling, so that the two-part fire protection set in two parts can be on top (Provides protection against (provides protection against fire from inside the ceiling))



Please respect the position of the fire protection set according to the above sketch. Fire protection from above!

Translation: Schnitt A-A :Section A-A, 2-teiliges Brandschutzset: 2-part fire protection set of mineral fibre, Revisionsverschluss : removable flap lid

ALUMATIC ONE SIDE EI60 - EI90

6. TECHNICAL SPECIFICATION

Item	Description	Unit	Price
Dak.B.GAN01.6XXX	Supply and installation of Alumatic One Side inspection hatch for use in self-supporting fireproof ceilings tested EI60/ EI90 (depending on model) for flame resistance on room side only. Maintains airtightness and thermal insulation for 60 (EI60) or 90 minutes (EI90) according to EN 13501-2 The aluminium frame profile is equipped with an intumescent band. The hatch cover is equipped with two DF fireproof plaster-board sheets and a lip seal that prevents the passage of smoke. Two safety catches of fireproof plastic, which allow the door to be retained when opened, complete the equipment. The hatch is easily removable from the frame and allows for quick repositioning. Delivered to the construction site in a cardboard box with a label showing the product characteristics.		
Dak.B.GAN01.6560	Dimensions 300 x 300 mm - Certified EI60.....	pc.	-
Dak.B.GAN01.6561	Dimensions 400 x 400 mm - Certified EI60.....	pc.	-
Dak.B.GAN01.6562	Dimensions 500 x 500 mm - Certified EI60.....	pc.	-
Dak.B.GAN01.6563	Dimensions 600 x 600 mm - Certified EI60.....	pc.	-
Dak.B.GAN01.6568	Dimensions 300 x 300 mm - Certified EI90.....	pc.	-
Dak.B.GAN01.6569	Dimensions 400 x 400 mm - Certified EI90.....	pc.	-
Dak.B.GAN01.6570	Dimensions 500 x 500 mm - Certified EI90.....	pc.	-
Dak.B.GAN01.6571	Dimensions 600 x 600 mm - Certified EI90.....	pc.	-