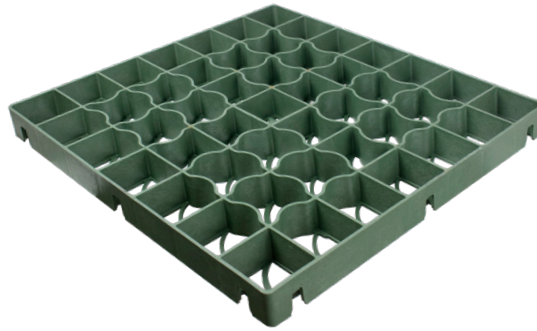
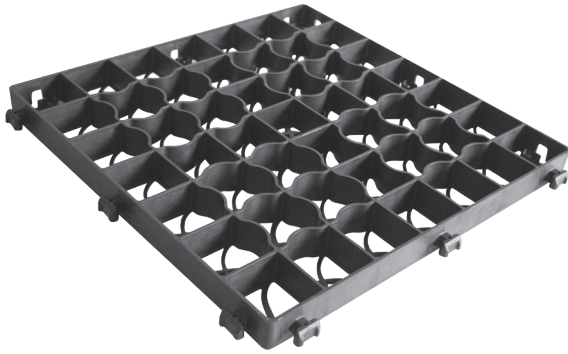


GROUND PAVING GRID



INDEX

1. Code registry
2. Description
3. Use
4. Load test
5. Technical specification

1. CODE REGISTRY

Code	Description	Colour	Dimension (mm)	Weight	Pkg. / Pallet
GAR01-0022N	Ground Paving Grid	Black	h. 39 - 500 x 500	1,20 kg/pcs.	1 pc. / 288 pcs.
GAR01-0022GV	Ground Paving Grid	Green	h. 39 - 500 x 500	1,20 kg/pcs.	1 pc. / 288 pcs.

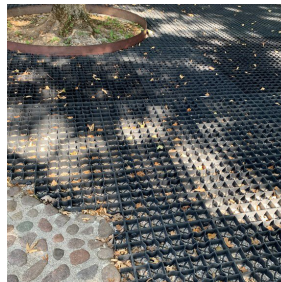
MATERIAL

Made of PP (polypropylene)

2. DESCRIPTION

Dak-Rock Heavy and Dak-Rock Heavy Green are two Dakota plastic paving grids and are the perfect ground reinforcement solution that can improve natural water drainage by preventing soil erosion. Specifically, Dak-Rock Heavy is a lifesaver tile that stabilizes the area to provide pedestrian and driveway transit, or parking area for cars and/or recreational activities. Dak-Rock Heavy Green is particularly good for color matching with the turf, which likewise is protected from damage by passing and parking cars or recreational activities. They are perfect alternatives to porphyry, self-blocking bricks, paving slabs and different types of concrete-based surfaces.

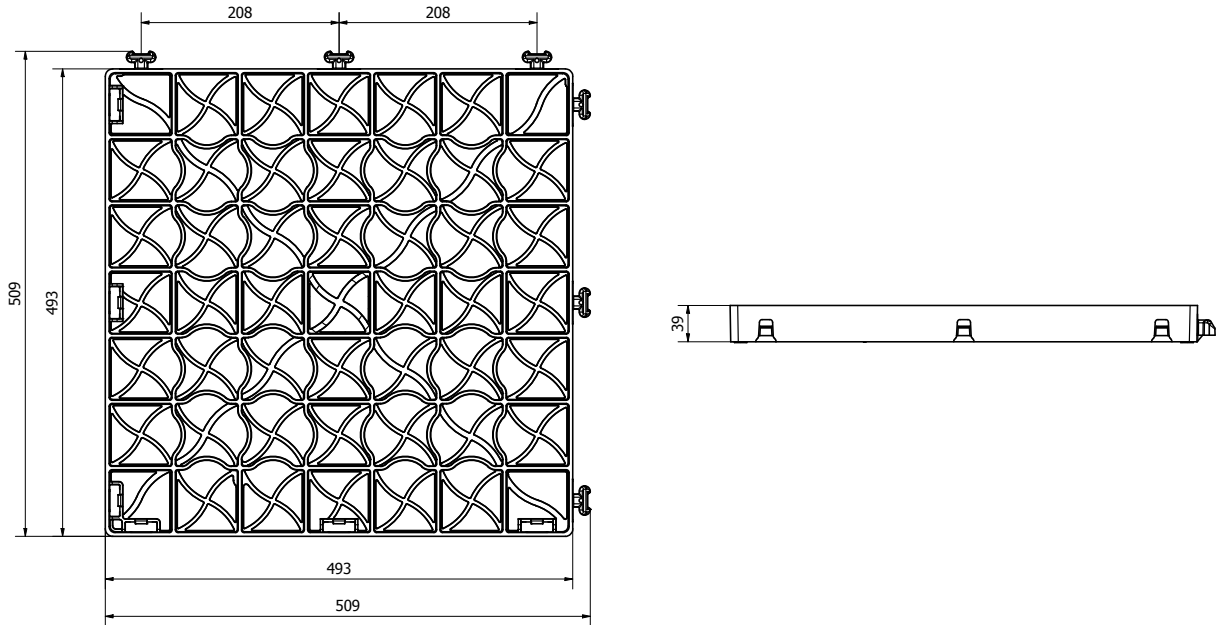
An innovative interlocking system also allows the panels to be connected together, effectively creating a continuous surface that is completely invisible once filled with aggregate or grass, thus preserving the natural character as well as the aesthetic integrity of the area.



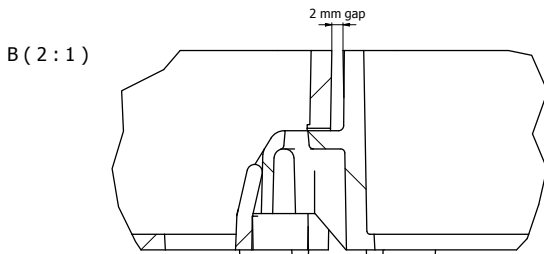
GROUND PAVING GRID

3. USE

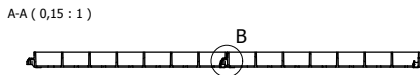
Dakota plastic paving grid is a ground reinforcement paving solution designed to improve natural water drainage and at the same time to prevent ground erosion. It is a perfect alternative to sett bricks, flagstone, openwork paving slabs and different kind of concrete based surfaces. Innovative interlocking system enables to connect the panels and create a continuous surface, which become completely invisible once filled with aggregate or grass, preserving the natural character of the area.



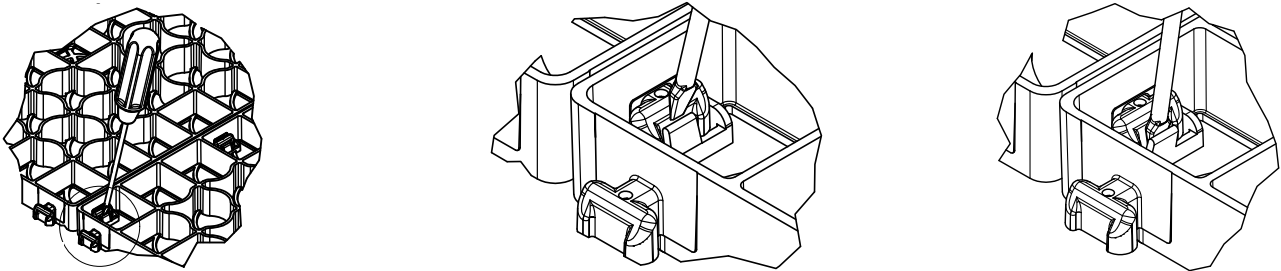
INTERLOCKING SYSTEM



Each grid has a click interlocking system on aside, in order to connect the panels and to create a continuous surface, which become completely invisible once filled with aggregate, gravels or grass.



UNFASTEN



The interlocking system is strong in order to guarantee a perfect connection and stability on the entire surface. In case of unfastening of some grids, you need a tool that acts as a lever, such as a common flat head screwdriver. The process is very simple:

1. Insert the screwdriver in the locking system between the panels;
2. Once fully inserted between the clip and the fixed slot
3. Push in order to "open" the clip and disconnect it, in order to lift up the grid and remove it.

GROUND PAVING GRID

4. LOAD TEST

TYPE OF TEST:

Load test - ISO 844 (Procedure A)

DESCRIPTION

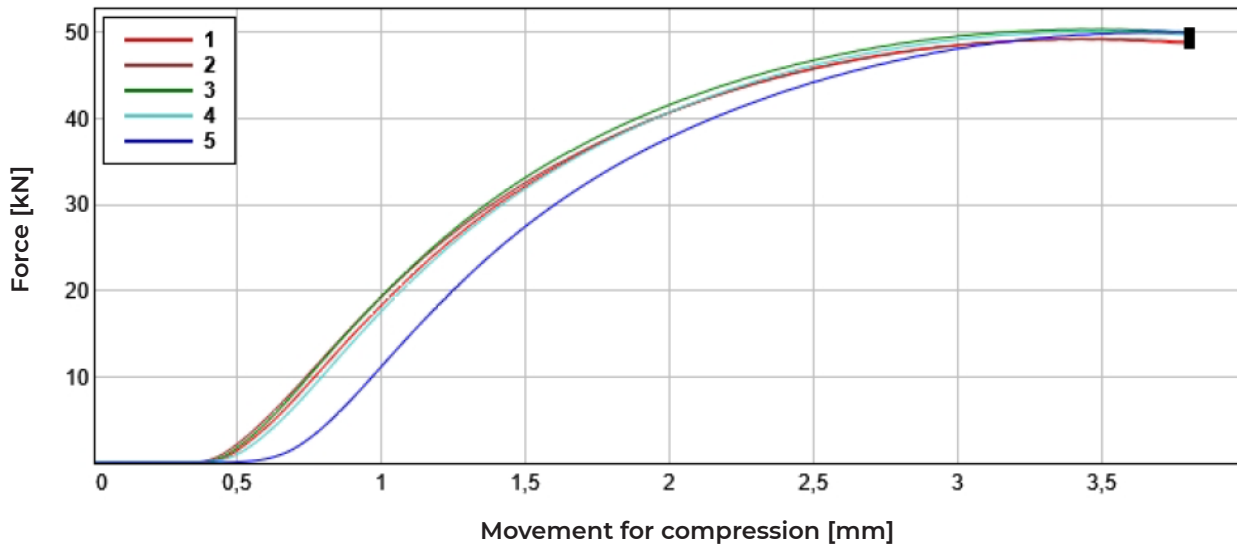
The item has been subjected to an increasing load through the use of an INSTRON electromechanical press model 5985 capacity 250 kN.

The test punch with which the load was applied has a size of 150x150 mm.

The size of the specimens is 150x150 mm equal to 4 cells.

A test was performed on n. 5 samples, with the following results:

	Load at 3,8 mm [kN]	Max Load [kN]	Deformation at max load [mm]	Stress [N/mm2]	Max load grid [kN]	Load per sqm [kN]	Load per sqm [ton]"
Test 01	48,71	49,23	3,44	76,07	2205	8822	899
Test 02	48,94	49,29	3,46	76,16	2208	8833	900
Test 03	50,03	50,40	3,43	77,87	2258	9032	921
Test 04	49,79	51,12	3,48	77,44	2245	8981	916
Test 05	49,98	50,03	3,98	77,30	2241	8965	914
Average Value	49,49	49,81	3,50	76,97	2232	8926	910



5. TECHNICAL SPECIFICATION

Specification	Description	Unity	Price
Dak.O.GAR01.0022N	Supply and installation of plastic paving grid for ground reinforcement. The function is to improve natural water drainage and at the same time to prevent ground erosion. Its interlocking system enables to connect the panels and create a continuous surface, which become completely invisible once filled with aggregate or grass, preserving the natural character of the area. It consists in a modular interlocking element of 500 x 500 x h.39 mm., made of PP and available in black colour Loading capacity > 900 tons/m². It is used for the reinforcement and strengthening of grass layers destined for parking cars and/or recreational activities and/or staging.	pc.	-
Dak.O.GAR01.0022GV	Supply and installation of plastic paving grid for ground reinforcement. The function is to improve natural water drainage and at the same time to prevent ground erosion. Its interlocking system enables to connect the panels and create a continuous surface, which become completely invisible once filled with aggregate or grass, preserving the natural character of the area. It consists in a modular interlocking element of 500 x 500 x h.39 mm., made of PP and available in black colour Loading capacity > 900 tons/m². It is used for the reinforcement and strengthening of grass layers destined for parking cars and/or recreational activities and/or staging.	pc.	-