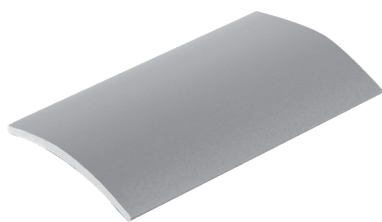


# ALUMINIUM OR BRASS JUNCTION



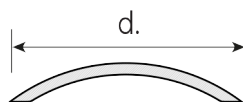
## INDEX

1. Code Registry
2. Description
3. Use
4. Technical Specification

## 1. CODE REGISTRY

Code	Description	(mm)	Weight	Colour	Pkg. / Pallet
PRO10-1990	Aluminium joint cover Silver	d 30,0 x 900	0,197 kg/m	Aluminium	18 m / - box
PRO10-1991	Aluminium joint cover Silver	d 30,0 x 2.700	0,197 kg/m	Aluminium	108 m / - box
PRO10-1992	Polished brass joint cover	d 30,0 x 900	0,165 kg/m	Brass	18 m / - box
PRO10-1993	Polished brass joint cover	d 30,0 x 2.700	0,165 kg/m	Brass	108 m / - box

**MATERIAL** Made of silver Aluminium or polished brass effect.



## 2. DESCRIPTION

Used to create an overlapping next the thresholds in order to highlight the transition between different colours of tiles and/or materials (eg. ceramic and parquet).

## 3. USE

Used to create an overlapping next the thresholds in order to highlight the transition between different colours of tiles and/or materials (eg. ceramic and parquet).

## 4. TECHNICAL SPECIFICATION

Specification	Description	Unity	Price
<b>Dak.I.PRO10.199x</b>	Supply and installation of connecting element with overlap for the thresholds in the transition between different materials. Available in sizes 30 x 900 or 30 x 2.700 mm. Single shrink packed inside a PVC tube. The barcode is shown both on the profile and on the tube (on the profile and on the cap). Made of silver Aluminium or polished brass effect. Used to create an overlapping next the thresholds in order to highlight the transition between different colours of tiles and/or materials (eg. ceramic and parquet).		
<b>Dak.I.PRO10.1990</b>	Aluminium - d 30,0 x 900 mm.....	m	-
<b>Dak.I.PRO10.1991</b>	Aluminium - d 30,0 x 2.700 mm.....	m	-
<b>Dak.I.PRO10.1992</b>	Brass - d 30,0 x 900 mm.....	m	-
<b>Dak.I.PRO10.1993</b>	Brass - d 30,0 x 2.700 mm.....	m	-