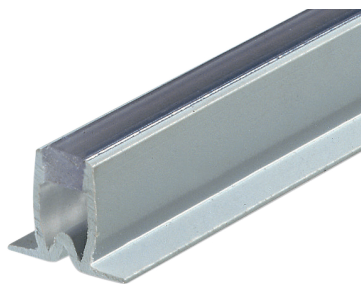


# TRANSPARENT AND GREY SILICONE JUNCTION



## INDEX

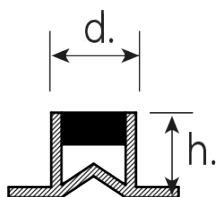
1. Code Registry
2. Description
3. Use
4. Technical Specification

## 1. CODE REGISTRY

Code	Description	(mm)	Weight	Colour	Pkg. / Pallet
PRO16-55C08	Transparent Silicone junction	d 8,0 x h 7,0 x 2.500	7,70 kg/box	Grey	100 m / 60 box
PRO16-55C10	Transparent Silicone junction	d 8,0 x h 9,0 x 2.500	9,40 kg/box	Grey	100 m / 60 box
PRO16-55C12	Transparent Silicone junction	d 8,0 x h 11,0 x 2.500	12,50 kg/box	Grey	100 m / 50 box
PRO16-55C14	Transparent Silicone junction	d 8,0 x h 13,0 x 2.500	11,00 kg/box	Grey	100 m / 40 box
PRO16-55C16	Transparent Silicone junction	d 8,0 x h 15,0 x 2.500	14,00 kg/box	Grey	100 m / 30 box
PRO16-55C08G	Grey Silicone junction	d 8,0 x h 7,0 x 2.500	7,70 kg/box	Grey	100 m / 60 box
PRO16-55C10G	Grey Silicone junction	d 8,0 x h 9,0 x 2.500	9,40 kg/box	Grey	100 m / 60 box

### MATERIAL

Made of coextruded vinyl resin



## 2. DESCRIPTION

Open expansion profile with silicone, to be placed between tile and tile.

Available in size (width per height) 8 x 8, 8 x 10, 8 x 12, 8 x 14:08 x 16 mm with transparent silicone and 8 x 8, 8 x 10 mm with grey silicone, packaged in bundles of 100 m.

The profile should not exceed the edge of the tile, but place 0.5 / 1 mm lower.

## 3. USE

Used as expansion joint, thus avoiding fissure and/or cracks in floors laid with glue due to stress, subsidence and thermal shock. We suggest to use 20-30 m<sup>2</sup> junction for internal use and 10-15 m<sup>2</sup> junction for external use.

Laying with glue.

# TRANSPARENT AND GREY SILICONE JUNCTION

## 4. TECHNICAL SPECIFICATION

Specification	Description	Unity	Price
<b>Dak.I.PRO16.55Cxxx</b>	Supply and installation Expansion open profile with silicone. Available in size (width per height) 8 x 8, 8 x 10, 8 x 12, 8 x 14, 8 x 16 mm with transparent silicone and 8 x 8, 8 x 10 mm with grey silicone, packed in bundles of 100 m. Made of PP (polypropylene) and silicone. Used as expansion joint, thus avoiding fissure and/or cracks in floors laid with glue due to stress, subsidence and thermal shock. We suggest to use 20-30 m <sup>2</sup> junction for internal use and 10-15 m <sup>2</sup> junction for external use. <b>Laying with glue.</b>		
<b>Dak.I.PRO16.55C08</b>	Dimension d. 8,0 x h 7,0 x 2.500 mm.....	box	-
<b>Dak.I.PRO16.55C10</b>	Dimension d. 8,0 x h 9,0 x 2.500 mm.....	box	-
<b>Dak.I.PRO16.55C12</b>	Dimension d. 8,0 x h 11,0 x 2.500 mm.....	box	-
<b>Dak.I.PRO16.55C14</b>	Dimension d. 8,0 x h 13,0 x 2.500 mm.....	box	-
<b>Dak.I.PRO16.55C16</b>	Dimension d. 8,0 x h 15,0 x 2.500 mm.....	box	-
<b>Dak.I.PRO16.55C08C</b>	Dimension d. 8,0 x h 7,0 x 2.500 mm.....	box	-
<b>Dak.I.PRO16.55C10C</b>	Dimension d. 8,0 x h 9,0 x 2.500 mm.....	box	-