

QUICK LEVEL



INDEX

1. Code registry
2. Description
3. Use
4. Measure conversion table
5. Technical specification

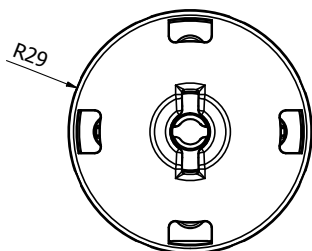
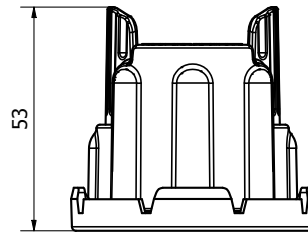
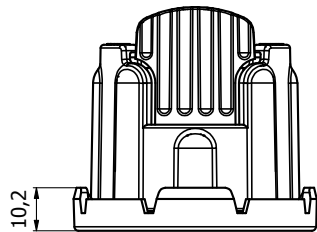
1. CODE REGISTRY

Code	Description	Colour	Measures (mm)	Weight	Bag / Pkg. / Pallet
TER04-4400DK	Cylinder Quick Level with scratch proof disk	Blue	-	0,93 kg/pcs.	50 pc. / 10 bags / 200 bags
TER04-4401DK	Disposable screw 1 mm for cylinder system from 3 to 22 mm	Green	1	0,300 kg/pcs.	100 pc. / 25 bags / 375 bags
TER04-44015DK	Disposable screw 1,5 mm for cylinder system from 3 to 22 mm	Grey	1,5	0,300 kg/pcs.	100 pc. / 25 bags / 375 bags
TER04-4402DK	Disposable screw 2 mm for cylinder system from 3 to 22 mm	Black	2	0,300 kg/pcs.	100 pc. / 25 bags / 375 bags
TER04-44025DK	Disposable screw 2,5 mm for cylinder system from 3 to 22 mm	Blue	2,5	0,300 kg/pcs.	100 pc. / 25 bags / 375 bags
TER04-4403DK	Disposable screw 3 mm for cylinder system from 3 to 22 mm	White	3	0,300 kg/pcs.	100 pc. / 25 bags / 375 bags
TER04-4404DK	Disposable screw 4 mm for cylinder system from 3 to 22 mm	Yellow	4	0,300 kg/pcs.	100 pc. / 25 bags / 375 bags

MATERIAL

made of regenerated plastic material

TER04-4400DK



QUICK LEVEL

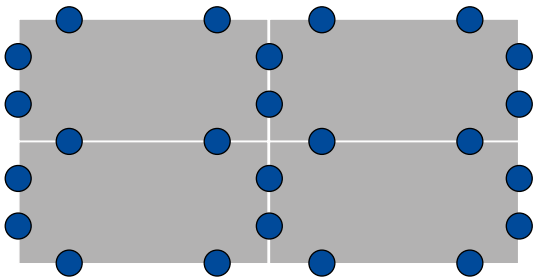
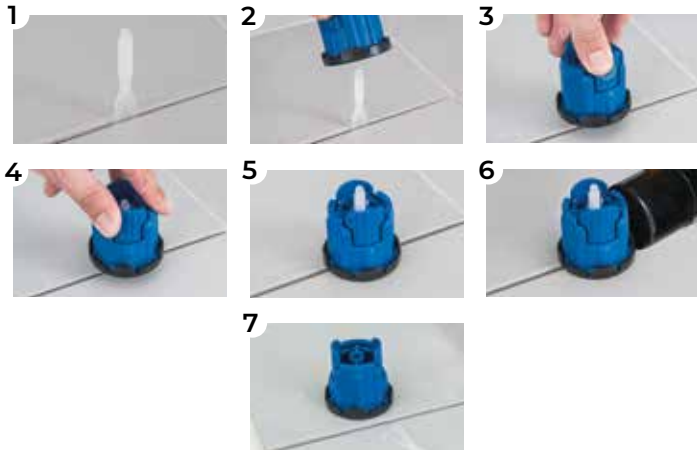
2. DESCRIPTION

Quick Level™ System is available in 2 different packagings:
 · Plastic box composed of 100 disposable screws and 50 leveling cylinders;
 · Single bags composed of 100 disposable screws or 50 cylinders.

A system composed of 2 elements (cylinder and spacer screw) that assembled and adjusted, allows, to remove any difference between tile and tile during the laying, obtaining a coplanar and equidistant result without any lippage.
 The cylinder is equipped with Scratch Proof Disk that allows a secure installation and prevents any scratches on the surface.
 The working range is very wide for tiles from 3 to 22 mm.
 Available in 1, 1.5, 2, 2.5, 3 and 4 mm joints.

3. USE

Use as a levelling tool for tiles of various dimensions and sizes.



A														
10	200													
15	133	89												
20	100	67	50											
25	80	53	40	32										
30	100	67	50	40	44									
40	75	50	37	30	33	25								
45	67	44	33	27	30	22	20							
50	60	45	30	24	27	20	13	16						
60	50	33	25	20	22	17	15	10	11					
80	50	33	25	20	21	16	14	15	10	9				
90	44	30	22	18	19	14	12	15	9	8	7			
100	50	33	25	20	20	15	13	15	10	9	8	8		
120	42	28	21	17	17	13	11	15	8	7	6	7	6	
cm	10	15	20	25	30	40	45	50	60	80	90	100	120	B

A

B

EXAMPLE:
to lay a 40 x 40 cm tile
use 25 pcs/m²

QUICK LEVEL

4. MEASURE CONVERSION TABLE

mm	inches	mm	inches	mm	inches	mm	inches
0,5	1/64"	5	3/16"	20	9/16"	60	2 3/8"
1	3/64"	6	9/32"	26	1"	66	2 5/8"
1,5	1/16"	7	9/32"	35	1 3/8"	90	3 9/16"
2	5/64"	10	3/8"	36	1 7/16"	115	4 1/2"
2,5	7/64"	12	1/12"	38	1 1/2"	170	6 3/4"
3	1/8"	15	9/16"	41	1 5/8"	220	8 2/3"
4	5/32"	18	3/4"	45	1 3/4"		

5. TECHNICAL SPECIFICATION

Item	Description	Unit	Price
Dak.I.TER04.440xDK	Supply and installation of System Leveling. A kit composed of two assembled elements (cylinder and screw). It is an easy and quick way to rectify any differences between tile and tile, thus obtaining a complanar and equidistant pose without any lippage. The cylinder is equipped with Scratch Proof Disk that allows a secure installation and prevents any scratches on the surface. The working range is very wide for tiles from 3 to 22 mm. Available in 1, 1,5, 2, 3 mm joints. Made of PP (polypropylene). Used as leveling system for flooring, facade tiles and coatings of various sizes and thicknesses, especially for large ones		
Dak.I.TER04.4400DK	Cylinder - Blue.....	pc.	-
Dak.I.TER04.4401DK	Disposable screw 1 mm for cylinder system from 3 to 22 mm	pc.	-
Dak.I.TER04.44015DK	Disposable screw 1,5 mm for cylinder system from 3 to 22 mm	pc.	-
Dak.I.TER04.4402DK	Disposable screw 2 mm for cylinder system from 3 to 22 mm	pc.	-
Dak.I.TER04.44025DK	Disposable screw 2,5 mm for cylinder system from 3 to 22 mm	pc.	-
Dak.I.TER04.4403DK	Disposable screw 3 mm for cylinder system from 3 to 22 mm	pc.	-
Dak.I.TER04.4404DK	Disposable screw 4 mm for cylinder system from 3 to 22 mm	pc.	-