

# CLAMP COVER



## INDEX

1. Code registry
2. Description
3. Use
4. Technical specification

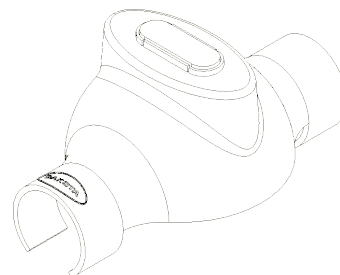
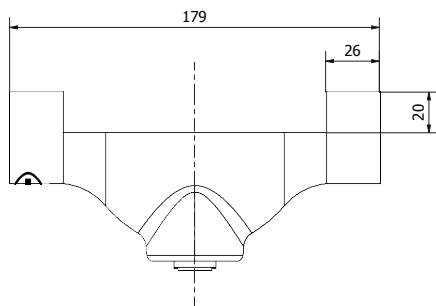
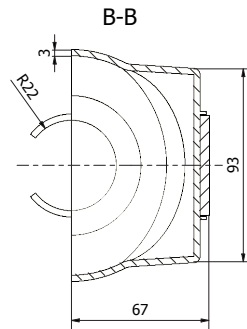
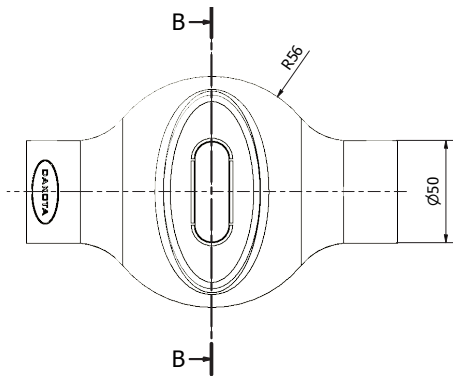
## 1. CODE REGISTRY

Code	Description	Weight	Measures (mm)	Color	Pkg. / Pallet
TER26-6303	Covercle du terminal	0,0066 gr/m <sup>2</sup>	110 x 180 x 90	Jaune	100 pc. / 2.000 pcs.

**MATERIAL** Made of PP (polypropylene).

## 2. DESCRIPTION

Warning and protective device of areas and/or elements on the construction site. Made of PP (polypropylene), yellow colour. Resistant to ageing due to exposure to the atmospheric agents. Equipped with red reflectors, to enable visibility in the dar Packed in carton box.



# CLAMP COVER

## 3. USAGE

Recommended to advise the presence of iron tubes for reducing hazards and accidents arising from failure or lack of identification or non-use of PPE.

## 4. SPÉCIFICATION TECHNIQUE

Produit	Description	Unité	Prix
<b>Dak.E.TER26-6303</b>	Supply and installation of a terminal cover to signal the presence of iron scaffolding pipes. Made of polypropylene and equipped with a red reflector to increase the visibility of its presence in the dark. Packed in a box.	pc.	-