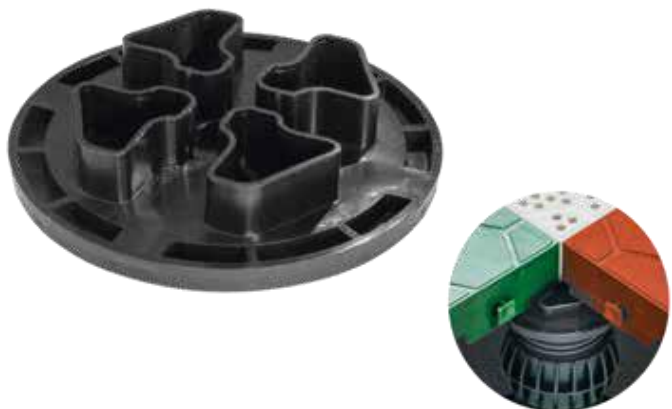


3D-SCOPIC HEAD FOR TILES



INDEX

1. Data and Documentation
2. Use
3. Specifications

1. DATA AND DOCUMENTATION

Code	Description	Dimensions (mm)	Weight	Pkg. / Pallet
TER09-1123T	3D-Scopic Head for PP Tiles Black	-	0.05 kg/pc.	150 pcs. / - pcs.

MATERIAL Made of PP (polypropylene).

2. USE

It allows floating floors on outdoor areas, terraces, shared flooring with Dk's Tile.

3. SPECIFICATION ITEMS

Entry	Description	Unit	Price
Dak.O.TER09.1123T	Supply and installation of accessory for Support 3D consisting of connection head between Support 3D-Scopico and Dk's Tile Dakota. Made of PP (polypropylene). It allows floating floors on outdoor areas, terraces, shared flooring with Dk's Tile.	pc.	-