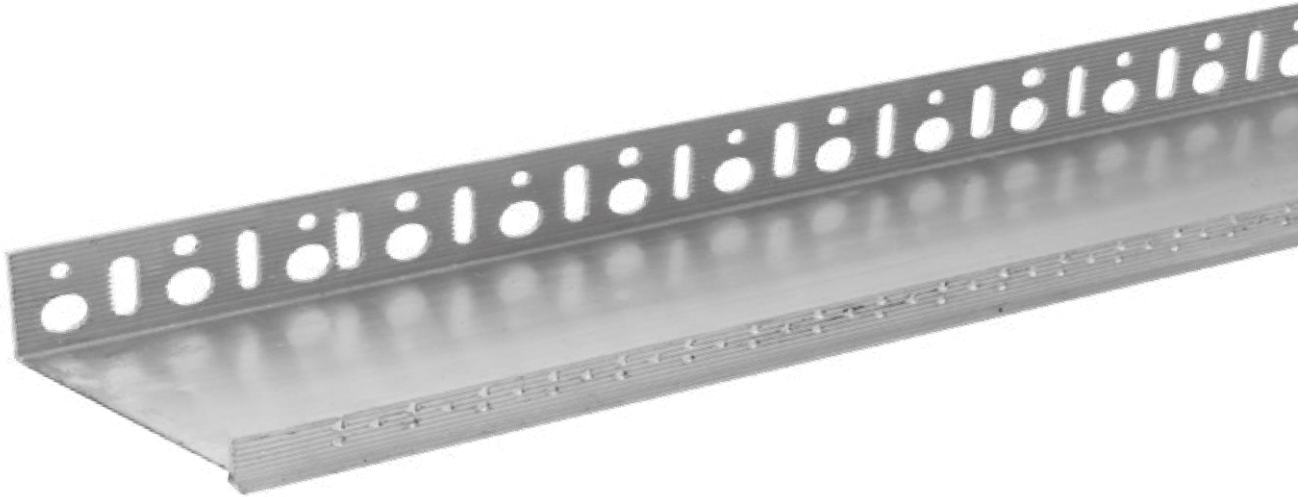


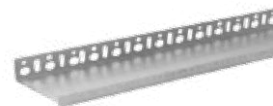
STARTING BASE EXTRUDED ALUMINIUM



INDEX

1. Master data
2. Technical Specifications
3. Certifications
4. Use
5. Laying
6. Technical Data
7. Specification item

STARTING BASE EXTRUDED ALUMINIUM



1. ANAGRAPHY

PRODUCT CODE:	ZIN32-1680/5AL ZIN32-1680/6AL ZIN32-1680/8AL ZIN32-1680/10AL ZIN32-1680/12AL
GROUP:	Extruded Aluminium Base Angles
FAMILY: NAME:	and Profiles for Coatings Extruded Aluminium Starting Base

2. TECHNICAL FEATURES

AVAILABLE SIZES:	50 x 2000 mm 60 x 2000 mm 80 x 2000 mm 100 x 2000 mm 120 x 2000 mm
SUPPLY:	20 m a pallet pack
MATERIAL:	Made of PVC
COLOUR:	Aluminium
WEIGHT:	180 g. 200 g. 230 g. 300 g. 340 g.

3. CERTIFICATIONS

4. USE

Used as a horizontal starting element for laying insulation panels when bonding to the wall in thermal insulation systems.

STARTING BASE EXTRUDED ALUMINIUM



5. INSTALLATION

6. TECHNICAL DATA

7. SPECIFICATION ITEM

Entry	Description	U.M.	Price
Dak.B.ZIN32.1680/x	Supply and installation of extruded starting profile with end section prepared for drip moulding. Available in different sizes depending on the thickness of the insulation panels. Made of extruded aluminium. Used as a horizontal starting element for laying insulation panels when bonding to the wall in thermal insulation systems. On site, the product must be delivered in cardboard boxes, bearing a control code.		
Dak.B.ZIN32.1680/5AL	Width 50 mm.....	m	-
Dak.B.ZIN32.1680/6AL	Width 60 mm.....	m	-
Dak.B.ZIN32.1680/8AL	Width 80 mm.....	m	-
Dak.B.ZIN32.1680/10AL	Width 100 mm.....	m	-
Dak.B.ZIN32.1680/12AL	Width 120 mm.....	m	-