

# PVC 3D PLUS WINDOW PROFILE WITH MESH



## INDEX

1. Data and Documentation
2. Description
3. Use
4. Specifications

## 1. DATA AND DOCUMENTATION

Code	Description	Measures mm	Quantity cf.	Weight (kg/cf.)	Pkg. / Pallet
ZIN33-1794	Window profile with 6 mm mesh	2.400	72 m (30 bars)	8	40 cf. / 1,200 m.
ZIN33-1795	Window profile with 6 mm strong mesh	2.400	72 m (30 bars)	8	40 cf. / 1,200 m.
ZIN33-1796	Window profile with 9 mm mesh	2.400	72 m (30 bars)	8	40 cf. / 1,200 m.

**MATERIAL** Made of PVC

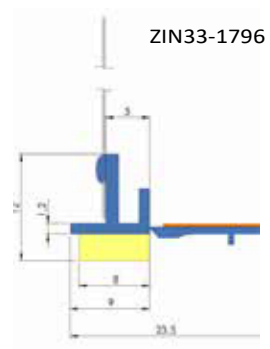
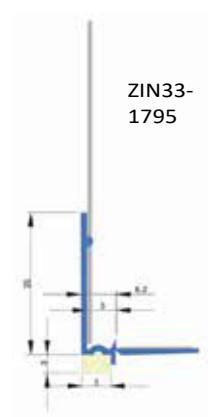
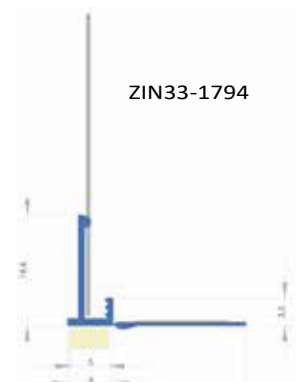
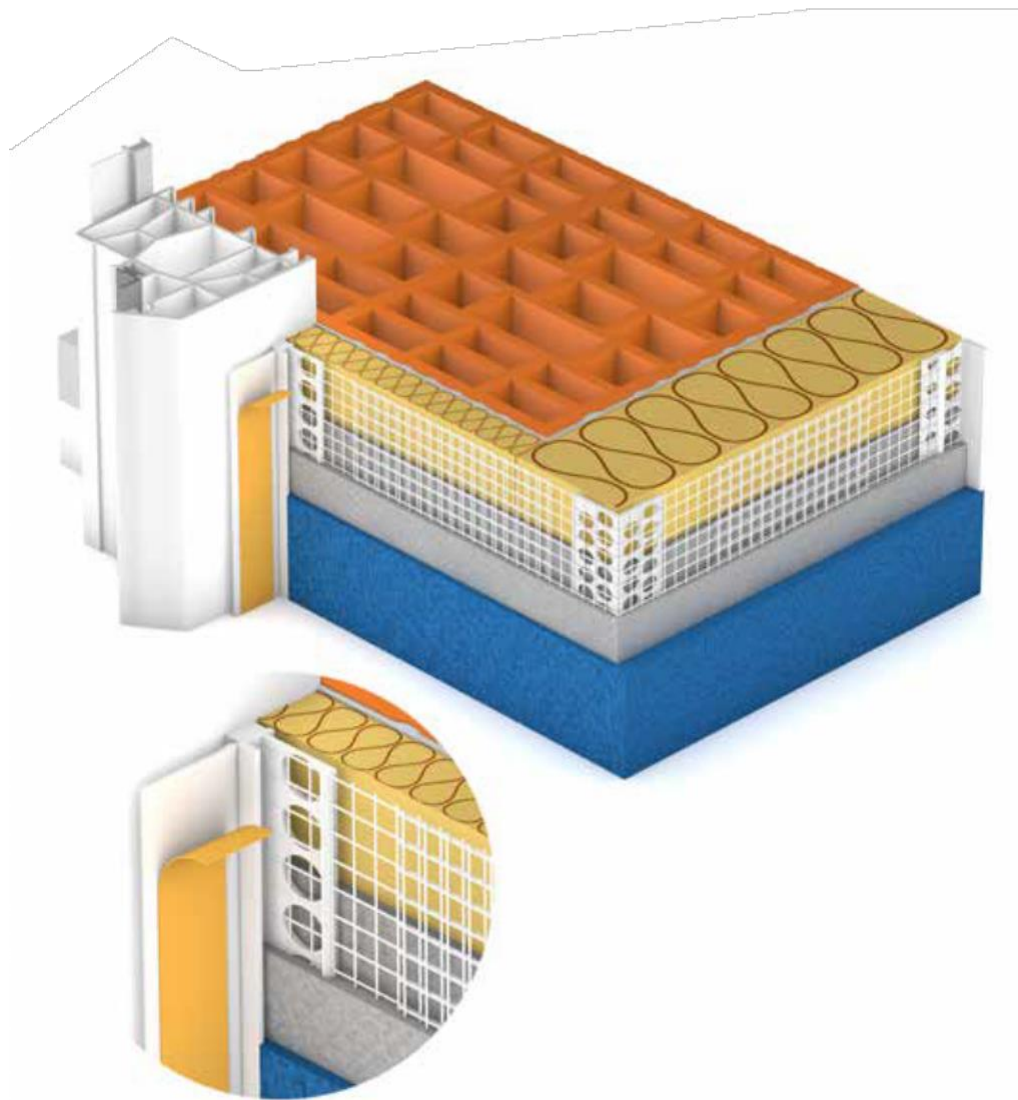
## 2. DESCRIPTION

PVC profile with polyethylene seals and self-adhesive tape.  
 Conforms to Standard UNI 1175:2018 CLASS 2D.

## 3. USE

Used on the window frame as a tight fitting on the plaster sash. It is equipped with a removable adhesive protective flap that allows the glass to be protected during smoothing.  
 It promotes the reduction of thermal bridges and absorbs expansion.

# PVC 3D PLUS WINDOW PROFILE WITH MESH



## 4. SPECIFICATION ITEMS

Entry	Description	U.M.	Price
<b>Dak.B.ZIN33.179x</b>	PVC profile fitted with polyethylene seals and self-adhesive tape. Conforms to Standard UNI 1175:2018 CLASS 2D.		
<b>Dak.B.ZIN33.1794</b>	Dimensions 2,400 mm.....	cf.	-
<b>Dak.B.ZIN33.1795</b>	Dimensions 2,400 mm.....	cf.	-
<b>Dak.B.ZIN33.1796</b>	Dimensions 2,400 mm.....	cf.	-