

FRAME



INDEX

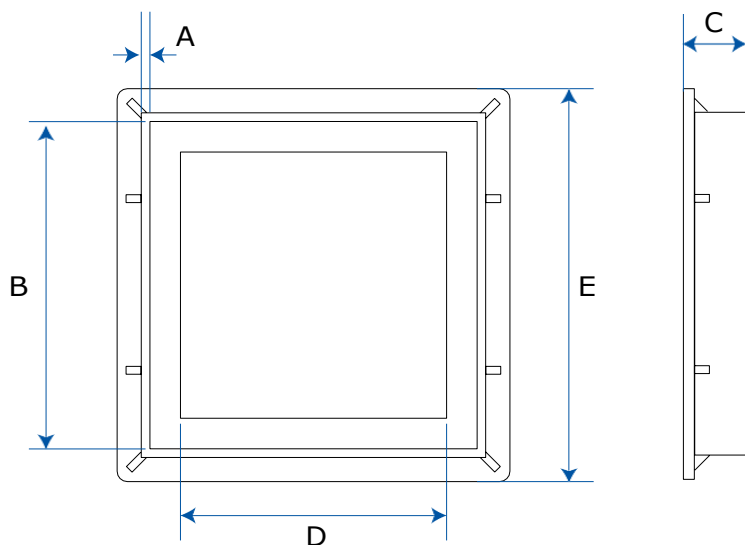
1. Data and Documentation
2. Use
3. Specifications

1. DATA AND DOCUMENTATION

Code	Description	Dimensions (mm)	Weight	Colour	Pkg. / Pallet
POZ04-1395	Frame for cover/grid	200 x 200	0.310 kg/pc.	Grey	1 pc. / 700 pcs.
POZ04-1393	Frame for cover/grid	250 x 250	0.425 kg/pc.	Grey	1 pc. / 432 pcs.
POZ04-1396	Frame for cover/grid	300 x 300	0.610 kg/pc.	Grey	1 pc. / 243 pcs.
POZ04-1394	Frame for cover/grid	350 x 350	0.660 kg/pc.	Grey	1 pc. / 225 pcs.
POZ04-1397	Frame for cover/grid	400 x 400	0.706 kg/pc.	Grey	1 pc. / 104 pcs.
POZ04-1399	Frame for cover/grid	450 x 450	1.166 kg/pc.	Grey	1 pc. / 100 pcs.
POZ04-1398	Frame for cover/grid	550 x 550	1.315 kg/pc.	Grey	1 pc. / 80 pcs.
POZ04-7070T	Frame for Seventy lid	700 x 700	3,900 kg/pc.	Grey	1 pc. / 15 pcs.

MATERIAL

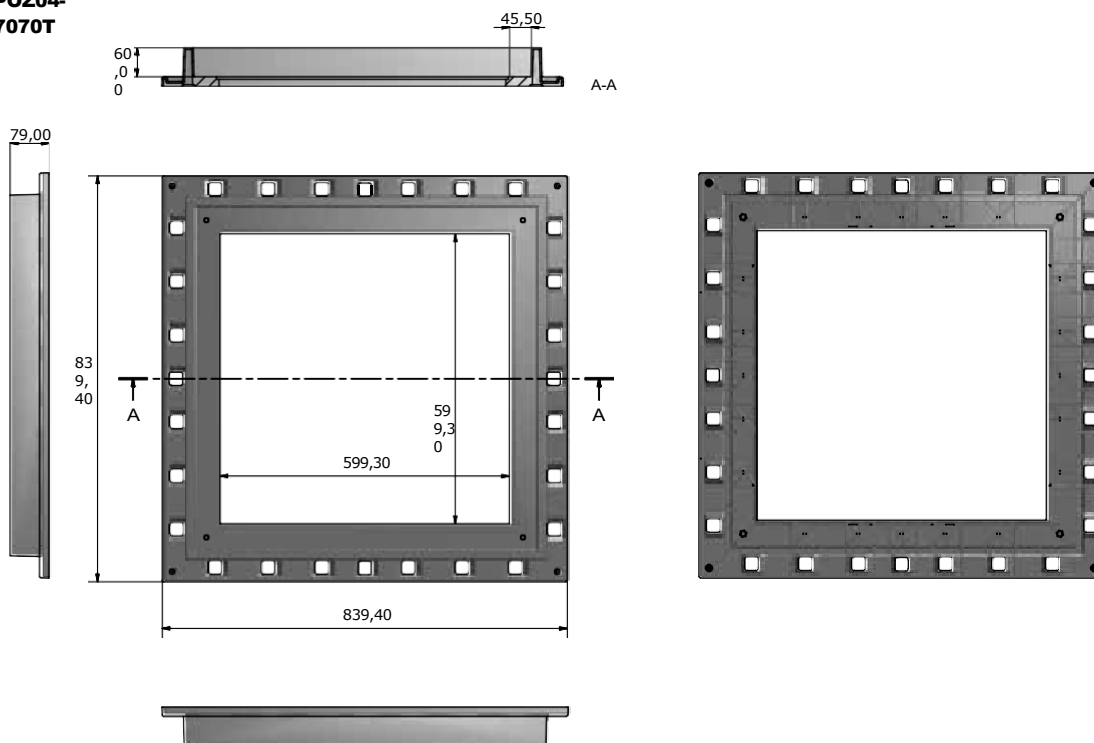
Made of PP (polypropylene).



	A	B	C	D	E	
POZ04-1395	4	187	39	162	214	mm
POZ04-1393	4	236	39	209	267	mm
POZ04-1396	5	283	41	251	323	mm
POZ04-1394	5	333	42	301	-	mm
POZ04-1397	4	381	44	354	425	mm
POZ04-1399	4	430	48	397	479	mm
POZ04-1398	4	533	53	501	585	mm

FRAME

POZ04-7070T



2. USE

Used in combination with lids and gratings on brick and/or concrete manholes on site or already existing.

3. SPECIFICATION ITEMS

Entry	Description	U.M.	Price
Dak.D.POZ04.139x	Supply and installation of frame to be combined with covers and gratings for manholes. Available in dimensions from 200 x 200 to 700 x 700 mm in the colour grey. Made of PP (polypropylene). Used in combination with lids and gratings on brick and/or concrete manholes installed or already existing.		
Dak.D.POZ04.1395	Dimensions 200 x 200 mm.....	pc.	-
Dak.D.POZ04.1393	Dimensions 250 x 250 mm.....	pc.	-
Dak.D.POZ04.1396	Dimensions 300 x 300 mm.....	pc.	-
Dak.D.POZ04.1394	Dimensions 350 x 350 mm.....	pc.	-
Dak.D.POZ04.1397	Dimensions 400 x 400 mm.....	pc.	-
Dak.D.POZ04.1399	Dimensions 450 x 450 mm.....	pc.	-
Dak.D.POZ04.1398	Dimensions 550 x 550 mm.....	pc.	-
Dak.D.POZ04.7070T	Dimensions 700 x 700 mm.....	pc.	-