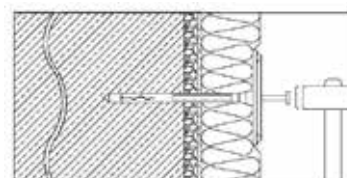
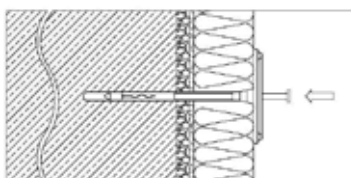
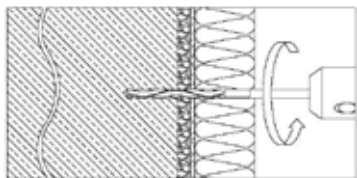


PLASTIC ANCHOR \varnothing 8 mm

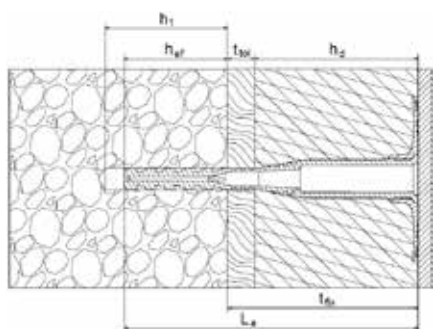


INDEX

1. Code registry
2. Use
3. Technical specification

1. CODE REGISTRY

Code	Description	Dimensions (mm)	Pkg.	Pallet	Weight
TER11-2214N	Plastic Anchors	70 x \varnothing 60	500 pcs	20.000 pcs	13 gr./pc.
TER11-2216N	Plastic Anchors	90 x \varnothing 60	400 pcs	16.000 pcs	14 gr./pc.
TER11-2218N	Plastic Anchors	110 x \varnothing 60	350 pcs	14.000 pcs	15 gr./pc.



Legend:

- h_1 = Hole Depth
- h_{ef} = Anchoring Depth
- t_{fix} = Fixable thickness ($h_d + t_{tol}$)
- h_d = Insulating panel thickness
- t_{tol} = Adhesive thickness or old plaster thickness
- L_a = Anchor Length

$$\text{Anchor Length } L_a = t_{fix} + h_{ef} = h_d + t_{tol} + h_{ef}$$

The anchor length (L_a) must be deep enough to ensure the minimum depth of anchorage to the wall (h_{ef}) and must necessarily consider the presence of pre-existing layers of plaster and adhesive (t_{tol}).

$$\text{Maximum thickness of the insulating panel } h_{dmax} = L_a - t_{tol} - h_{ef}$$

CERTIFICATIONS

Certified according to ETAG014.
ETA-06/0242

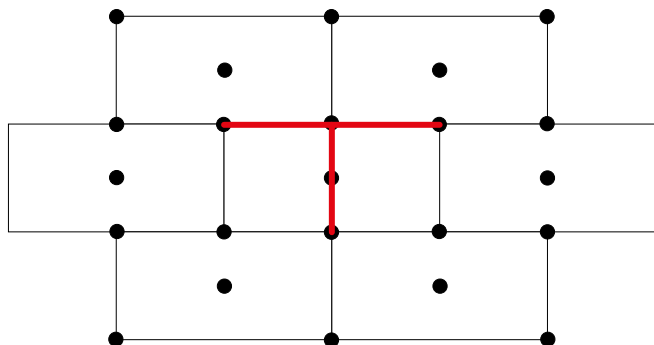
The base materials that have been certified are:
cat. A (concrete)
cat. B (solid masonry)
cat. C (hollow or perforated masonry)
cat. D (lightweight aggregate concrete)
cat. E (autoclaved aerated concrete)

PLASTIC ANCHOR \varnothing 8 mm

2. USE

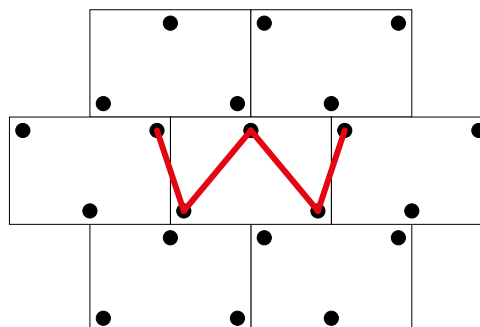
The anchors must be placed where the adhesive has been applied. This solution will increase the adhesive cohesion strength generated by the anchor. The positioning of anchors can be done according to the following tessellation schemes.

TESSELEATION SCHEME "T" SHAPE



Polystyrene panels (EPS) with 6 anchors/sqm.
In the tessellation scheme "T" there will be an anchor positioned on every panel intersection, plus one more anchor positioned on the center of each panel.

TESSELEATION SCHEME "W" SHAPE



Mineral wool panels (MW) with 6 anchors/sqm.
In the tessellation scheme "W" each insulating panel is fixed with 3 anchors.

3. TECHNICAL SPECIFICATION

Specification	Description	Unity	Price
Dak.B.TER11.221x	Supply and installation of 8 mm hole percussion mechanical fixing, with 60 mm head, improved grip and polyamide nail. Certified according to ETAG014. ETA-06/0242 The base materials that have been certified are: cat. A (concrete) cat. B (solid masonry) cat. C (hollow or perforated masonry) cat. D (lightweight aggregate concrete) cat. E (autoclaved aerated concrete) Made of PP (polypropylene plug), nail made of fiber glass/polyamide. Anchors positioning and number per sqm will be defined by the architect or by construction supervisor. Used for the mechanical anchoring of the insulating panels for almost all types of masonry, supporting the load and any "tear-off" stress.		
Dak.B.TER11.2214N	Length 70 mm - Head 60 mm - \varnothing 8.....	pc.	-
Dak.B.TER11.2216N	Length 90 mm - Head 60 mm - \varnothing 8.....	pc.	-
Dak.B.TER11.2218N	Length 110 mm - Head 60 mm - \varnothing 8.....	pc.	-