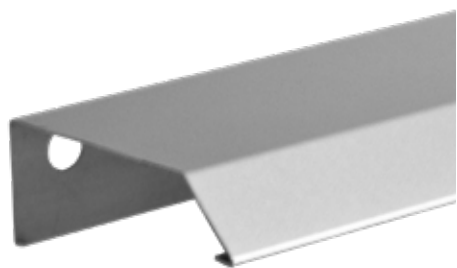


COVER BEAD WITH DRIP



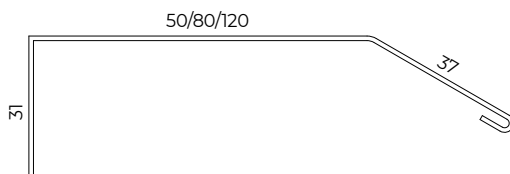
INDEX

1. Code Registry
2. Use
3. Technical specification

1. CODE REGISTRY

| Code | Description | Dimensions (mm) | Weight | Colour | Pkg. / Pallet |
|---------------|----------------------|-----------------|-----------|----------|---------------|
| ZIN32-1680/S | Cover bead with drip | 50 x 2.500 | 250 gr./m | Aluminum | 50 m / - m |
| ZIN32-1680/S1 | Cover bead with drip | 80 x 2.500 | 300 gr./m | Aluminum | 35 m / - m |
| ZIN32-1680/S2 | Cover bead with drip | 120 x 2.500 | 500 gr./m | Aluminum | 20 m / - m |

MATERIAL Made of aluminum.



2. USE

Used to cover and protect the insulation board at the sub-window and the window sill.

3. TECHNICAL SPECIFICATION

| Specification | Description | Unity | Price |
|----------------------------|---|-------|-------|
| Dak.B.ZIN32.1680/Sx | Supply and installation of junction profile, pre-drilled on the wall side, shaped to protect the insulating panel (thickness 50 - 80 - 120 mm). Made of aluminum. Used to cover and protect the insulation board at the sub-window and the window sill. | | |
| Dak.B.ZIN32.1680/S | Dimension 50 x 2.500 mm..... | box. | - |
| Dak.B.ZIN32.1680/S1 | Dimension 80 x 2.500 mm..... | box. | - |
| Dak.B.ZIN32.1680/S2 | Dimension 120 x 2.500 mm..... | box. | - |