

# QUICK LEVEL



## INDEX

1. Code Registry
2. Use
3. Technical Specification

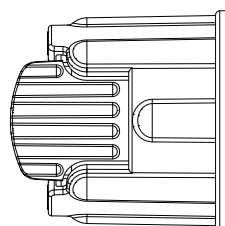
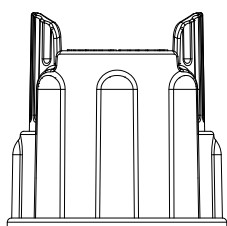
## 1. CODE REGISTRY

Code	Description	Colour	Dimension (mm)	Weight	Bag / Pkg. / Pallet
TER04-4400DK	Cylinder Quick Level with scratch proof disk	White/blue	-	- kg/pcs	50 pcs / 10 bags / 200 bags
TER04-4401DK	Quick Level - Spacer Clip 1 mm	White/blue	1	- kg/pcs	100 pcs / 30 bags / 450 bags
TER04-44015DK	Quick Level - Spacer Clip 1,5 mm	White/blue	1,5	- kg/pcs	100 pcs / 30 bags / 450 bags
TER04-4402DK	Quick Level - Spacer Clip 2 mm	White/blue	2	- kg/pcs	100 pcs / 30 bags / 450 bags
TER04-4403DK	Quick Level - Spacer Clip 3 mm	White/blue	3	- kg/pcs	100 pcs / 30 bags / 450 bags

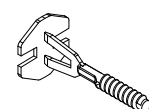
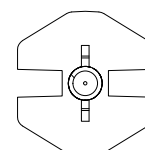
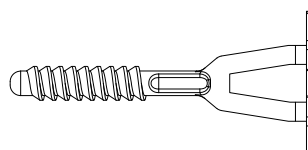
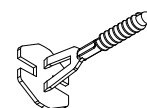
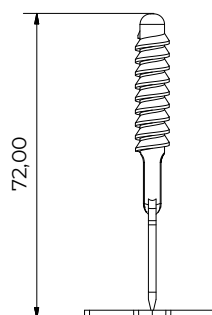
### MATERIAL

Made of PP (polypropylene).

### TER04-4400DK



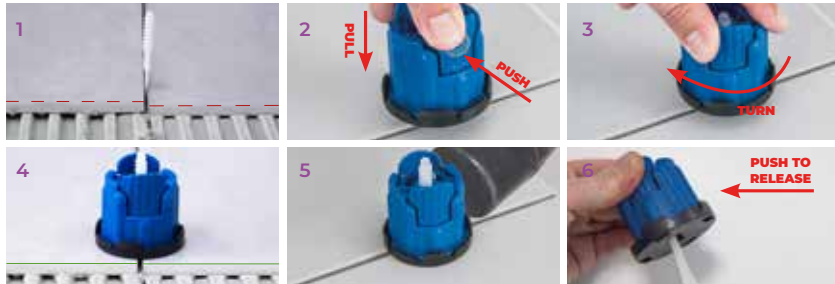
### TER04-4401DK TER04-44015DK TER04-4402DK TER04-4403DK



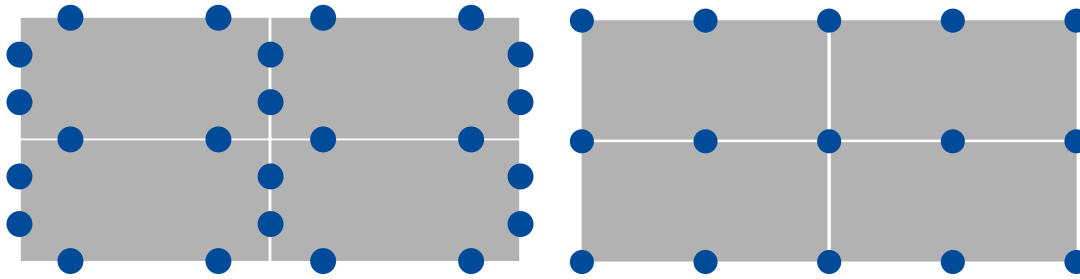
# QUICK LEVEL

## 2. USE

Use as a levelling tool for tiles of various dimensions and sizes.



A (cm)	10	15	20	25	30	33	40	45	50	60	80	90	100	120	B (cm)																																																																																																			
	200	133	89	100	67	50	80	53	40	32	100	67	50	40	44	33	91	61	45	36	40	37	40	75	50	37	30	33	30	25	45	67	44	33	27	30	27	22	20	50	60	40	30	24	27	24	20	13	16	60	50	33	25	20	22	20	17	15	10	11	80	50	33	25	20	21	19	16	14	15	10	9	90	44	30	22	18	19	17	14	12	15	9	8	7	100	50	33	25	20	20	18	15	13	15	10	9	8	8	120	42	28	21	17	17	15	13	11	15	8	7	6	7	6



## 3. TECHNICAL SPECIFICATION

Specification	Description	Unity	Price
<b>Dak.I.TER04.440xDK</b>	Supply and installation of System Leveling. A kit composed of two assembled elements (cylinder and screw). It is an easy and quick way to rectify any differences between tile and tile, thus obtaining a complanar and equidistant pose without any lippage. The cylinder is equipped with Scratch Proof Disk that allows a secure installation and prevents any scratches on the surface. The working range is very wide for tiles from 3 to 22 mm. Available in 1, 1.5, 2, 3 mm joints. Made of PP (polypropylene). Used as leveling system for flooring, facade tiles and coatings of various sizes and thicknesses, especially for large ones.		
<b>Dak.I.TER04.4400DK</b>	Cylinder Quick Level with scratch proof disk.....	pcs	-
<b>Dak.I.TER04.4401DK</b>	Quick Level - Spacer Clip 1 mm.....	pcs	-
<b>Dak.I.TER04.44015DK</b>	Quick Level - Spacer Clip 1,5 mm.....	pcs	-
<b>Dak.I.TER04.4402DK</b>	Quick Level - Spacer Clip 2 mm.....	pcs	-
<b>Dak.I.TER04.4403DK</b>	Quick Level - Spacer Clip 3 mm.....	pcs	-