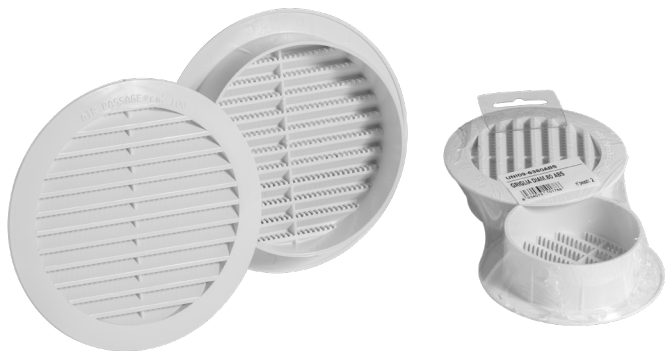


ABS FIXED ROUND GRILL



INDEX

1. Code Registry
2. Use
3. Technical Specification

1. CODE REGISTRY

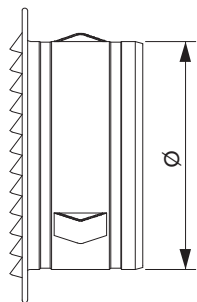
| Code | Description | Dimension (mm) | Weight | Pkg. / Pallet |
|---------------|-------------------|----------------|--------------|-----------------------|
| UNI09-6360ABS | Fixed round grill | inlet 60 | 0,018 kg/pc. | 200 pcs. / 6.000 pcs. |
| UNI09-6380ABS | Fixed round grill | inlet 80 | 0,030 kg/pc. | 100 pcs. / 3.000 pcs. |
| UNI09-6400ABS | Fixed round grill | inlet 100 | 0,040 kg/pc. | 100 pcs. / 2.000 pcs. |
| UNI09-6410ABS | Fixed round grill | inlet 110 | 0,052 kg/pc. | 80 pcs. / 1.600 pcs. |
| UNI09-6420ABS | Fixed round grill | inlet 120 | 0,054 kg/pc. | 50 pcs. / 1.000 pcs. |
| UNI09-6441ABS | Fixed round grill | inlet 140 | 0,078 kg/pc. | 80 pcs. / 1.200 pcs. |
| UNI09-6442ABS | Fixed round grill | inlet 160 | 0,098 kg/pc. | 60 pcs. / 1.200 pcs. |
| UNI09-6443ABS | Fixed round grill | inlet 200 | 0,100 kg/pc. | 30 pcs. / 750 pcs. |

MATERIAL

Made of ABS, white glossy effect.
It is particularly resistant to ageing caused by exposure to the atmospheric agents.

2. USE

It guarantees the air circulation between the internal and external environments, reducing the condensation and the formation of mold.



| Code | Dimension (mm) | Air passage (cm ³) |
|---------------|----------------|--------------------------------|
| UNI09-6360ABS | 60 | 7 |
| UNI09-6380ABS | 80 | 15 |
| UNI09-6400ABS | 100 | 22 |
| UNI09-6410ABS | 110 | 22 |
| UNI09-6420ABS | 120 | 32 |
| UNI09-6441ABS | 140 | 39 |
| UNI09-6442ABS | 160 | 53 |
| UNI09-6443ABS | 200 | 83 |

ABS FIXED ROUND GRILL

3. TECHNICAL SPECIFICATION

| Specification | Description | Unity | Price |
|----------------------------|--|-------|-------|
| Dak.O.UNI09.6xxx | Supply and installation of universal round/rectangular grill, equipped with anti-insects mesh. Packed in blister with barcode. Made of ABS, white glossy effect. It is particularly resistant to ageing caused by exposure to the atmospheric agents. It guarantees the air circulation between the internal and external environments, reducing the condensation and the formation of mold. | | |
| Dak.O.UNI09.6360ABS | Dimensions inlet 60 mm..... | pc. | - |
| Dak.O.UNI09.6380ABS | Dimensions inlet 80 mm..... | pc. | - |
| Dak.O.UNI09.6400ABS | Dimensions inlet 100 mm..... | pc. | - |
| Dak.O.UNI09.6410ABS | Dimensions inlet 110 mm..... | pc. | - |
| Dak.O.UNI09.6420ABS | Dimensions inlet 120 mm..... | pc. | - |
| Dak.O.UNI09.6441ABS | Dimensions inlet 140 mm..... | pc. | - |
| Dak.O.UNI09.6442ABS | Dimensions inlet 160 mm..... | pc. | - |
| Dak.O.UNI09.6443ABS | Dimensions inlet 200 mm..... | pc. | - |